



Security Tech Germany



# ABUS USA 2022 PRICE LIST

800.352.ABUS | [abus.com](https://abus.com)



# ABUS ADVANTAGES



## SAME DAY SHIPPING

Stock orders received by 6 p.m. EST ship the same day!



## LEADING PADLOCK MANUFACTURER

ABUS is the market-leading padlock manufacturer throughout the world



August Bremicker and his sons founded ABUS in 1924 in Volmarstein, Germany

## ENGINEERED TO HIGHEST GLOBAL STANDARDS

ABUS products are German engineered and undergo a series of extensive tests to meet international standards. ABUS product quality is second to none.



## GLOBAL IMPACT

3,500+ Employees  
25 Branch Offices



Security Tech Germany

## IN-HOUSE LASER ENGRAVING



In-house engraving is fast and reliable – most orders ship in 5 business days



## CHARTING & KEY STAMPING

Rely on ABUS to keep key code records for your facility

ABUS can provide locks to match an existing keyway in your facility

## KEY INTO EXISTING SYSTEMS

US headquarters provide short lead times and fast delivery



**ABUS USA ★ PHOENIX, ARIZONA**  
UNITED STATES HEADQUARTERS AND WAREHOUSE



Security Tech Germany

## CUSTOMER SUPPORT

Do you have a question concerning ABUS, but don't know who to contact? We're here to help, and you can contact us in the following ways:

- Call us at 800-352-ABUS to speak to a Customer Support Representative from 7:00 a.m. to 4:00 p.m. Mountain Standard Time.
- Email us at [customerservice@us.abus.com](mailto:customerservice@us.abus.com).
- Visit [www.abus.com](http://www.abus.com) to learn more about ABUS products and services.

FIND US @ABUSUSA!



**Security** 4  
Padlocks, Diskus®, Hasps, Chains,  
Cables, KeyGarage™, File Bars,  
Wall and Floor Anchors

**Safety Lockout** 23  
Safety Padlocks, Devices, Kits,  
Toolboxes, Safety Centers, Boards,  
Hasps, Labels

**Key Blanks** 30  
Key Blanks in a Variety of Shapes  
and Sizes

**General Information** 34  
Terms and Conditions

**PLEASE NOTE:** ABUS products come packaged in a box as a standard unless noted with a C in the description which indicates the product is blister packaged.

## Padlock Keying Charges

- Keyed Different (KD) Standard (no additional charge)
- Keyed Alike (KA) = KD + \$1.05 additional per lock
- Master Keyed (MK) = KD + \$5.00 additional per lock
- Key Stamping \$1.00 additional per key\*
- Key Retaining \$.40 additional per key\*
- Extra Cut Key \$1.75 additional per key\*
- Extra Plus Cut Key \$5.00 additional per key\*
- Extra Plus LED Cut Key \$6.00 additional per key\*
- Extra Master Cut Key \$3.00 additional per key\*
- Extra Dimple Cut Key \$2.50 additional per key\*
- Charting KD Locks \$.40 additional per lock\*
- Custom laser engraving \$1 per lock up to 3 lines\*

\*net

**DUE TO SECURITY REASONS, WE ARE UNABLE TO PROVIDE CUSTOMERS WITH COMBINATIONS FOR THEIR PREVIOUSLY PURCHASED PADLOCKS.**

## Steel Cable

Flexible steel cable with vinyl coating, ideal for use with padlocks or bike locks.



10/500

Description	Inner Pk	Item #	List Price
8/200 C non-coiled steel cable (5/16" dia. and 6' length)	1	12710	\$25.83
8/250 C non-coiled steel cable (5/16" dia. and 10' length)	1	12711	\$35.93
10/200 C non-coiled steel cable (3/8" dia. and 6' length)	1	12712	\$33.74
10/500 C non-coiled steel cable (3/8" dia. and 16' length)	1	12713	\$70.21
10/1000 C non-coiled steel cable (3/8" dia. And 33' length)	1	12714	\$136.04
1850/185 Cobra coiled steel cable (8' dia. and 7' length)	10	12702	\$17.06

## Silver Rock™

Solid zinc body padlocks provides superior security and withstands outdoor elements. Designed to work in most jobsite construction boxes.



5/50HB25

Description	Inner Pk	Item #	List Price
5/50HB25 KD (1" shackle)	6	62795	\$16.56
5/50HB25 KA (1" shackle)	6	550001	\$18.71

## Diskus®

The original 360° protection Diskus®, made in Germany with precision pin tumbler and anti-pick pins. Also available in corrosion-protected 24IB.

**Keyed Alike (KA): +\$1.05 List Price, Master Keyed (MK): +\$5.00 List Price**

Description	Key Options	Inner Pk	Item #	List Price
20/70 KD	KD, KA, MK	6	20715	\$64.73
20/80 KD	KD, KA, MK	3	20815	\$83.43
24IB/50 KD	KD, KA	6	24590	\$25.83
24IB/60 C KD	KD	6	24911	\$33.68
24IB/60 KD	KD, KA, MK	6	24915	\$33.68
24IB/70 C KD	KD	6	24011	\$37.35
24IB/70 C KAx2 TWIN PACK	KA	3	24013	\$74.71
24IB/70 KD	KD, KA, MK	6	24015	\$37.35
24IB/70 RK OB RH-5 4 pin loaded	N/A	6	24950	\$49.81
24IB/70 RK OB RH-5 5 pin loaded	N/A	6	24948	\$49.81
24IB/70 RK OB M1 4 pin loaded	N/A	6	24945	\$49.81
24/70 RK OB Cylinder RH-5 4 pin loaded	N/A	6	24980	\$6.25
24/70 RK OB Cylinder RH-5 5 pin loaded	N/A	6	25000	\$6.31
2409 Cylinder Removal Tool	N/A	1	24986	\$1.59



20/70



24IB/70



## Diskus®

Keyed Alike (KA): +\$1.05 List Price, Master Keyed (MK): +5.00 List Price				
Description	Key Options	Case Pk	Item #	List Price
2408 24 Series Rekeying Kit (24-SK-1)	N/A	1	24999	\$135.33
25/70 KD	KD, KA	6	26001	\$42.93
25/70 KA	KA	6	26002	\$44.16
26/70 KD	KD, KA, MK	6	26010	\$37.35
26/80 KD	KD, KA, MK	3	26510	\$62.20
26/90 KD	KD, KA, MK	3	26810	\$87.11
28/60 KD	KD, KA	6	28005	\$24.90
28/70 C KD	KD	6	28011	\$26.22
28/70 KD	KD, KA	6	28015	\$26.22



25/70



26/70



28/70

Security

Safety Lockout

## Granit™

Body and shackle made from hardened alloy steel with Black Granit™ coating for superior corrosion resistance. ABUS Plus disk cylinder provides maximum protection. Shackle inserted from the top for optimum drill and pull resistance.

Keyed Alike (KA): +\$1.05 List Price, Master Keyed (MK): +5.00 List Price				
Description	Key Options	Inner Pk	Item #	List Price
37/55 C KD	KD	1	37910	\$118.43
37/55 RK KD	KD, KA, MK	3	37915	\$118.43
37/55ST C KD	KD	1	37100	\$175.54
37/55HB50 KD (2" shackle)	KD, KA, MK	4	37935	\$125.12
37/55HB75 KD (3" shackle)	KD, KA, MK	3	37968	\$131.82
37RK/60 KD	KD, KA, MK	3	37925	\$143.83
37RK/70 KD	KD, KA, MK	1	37970	\$182.83
37RK/80 KD	KD, KA, MK	1	37980	\$205.70
37 Series Rekeying Kit (37SK-1)	N/A	1	37001	\$1,224.94



37/55 ST



37/55



37/60

Key Blanks

## Laminated Steel

ETERNA™ coating on each laminate of the 41 series provides extreme corrosion resistance, with hardened steel shackle, 5-pin cylinder and countersunk rivets.

Keyed Alike (KA): +\$1.05 List Price, Master Keyed (MK): +5.00 List Price				
Description	Key Options	Inner Pk	Item #	List Price
41/30 KD	KD, KA, MK	12	41415	\$12.51
41/40 C KD Blue Bumper	KD	6	41611	\$13.99
41/40 KD Blue Bumper	KD, KA, MK	12	41615	\$13.99
41/40 KD Black Bumper	KD, KA, MK	12	09672	\$13.99
41/40 KD Green Bumper	KD, KA, MK	12	42012	\$13.99
41/40 KD Red Bumper	KD, KA, MK	12	42013	\$13.99
41/40 KD White Bumper	KD, KA, MK	12	42014	\$13.99
41/40 KD Yellow Bumper	KD, KA, MK	12	42015	\$13.99
41/40HB50 KD Blue Bumper	KD, KA, MK	6	41635	\$16.29
41/40HB50 KD Black Bumper	KD, KA, MK	6	09686	\$16.29
41/40HB50 KD Green Bumper	KD, KA, MK	6	41381	\$16.29
41/40HB50 KD Red Bumper	KD, KA, MK	6	41382	\$16.29
41/40HB50 KD White Bumper	KD, KA, MK	6	41383	\$15.74
41/40HB50 KD Yellow Bumper	KD, KA, MK	6	41384	\$15.74
41/45 C KD	KD	6	41711	\$15.79



41/30



41/40



41/40HB50

General Information



41/50



45/40



55/30



55MB/40



55/40HB63



55/50



65/50

## Laminated Steel

**Keyed Alike (KA): +\$1.05 List Price, Master Keyed (MK): +\$5.00 List Price**

Description	Key Options	Case Pk	Item #	List Price
41/45 KD	KD, KA, MK	6	41715	\$15.79
41/45HB50 KD (2" shackle)	KD, KA, MK	6	41735	\$17.72
41/50 C KD	KD	6	41811	\$19.42
41/50 KD	KD, KA, MK	6	41815	\$19.42
41/50HB50 KD (2" shackle)	KD, KA	6	41835	\$21.28
45/30 C KD	KD	6	45411	\$8.31
45/40 C KD	KD	6	45611	\$10.09
45/40HB50 C KD (2" shackle)	KD	6	45641	\$12.18
45/45 C KD	KD	6	45711	\$12.18

## Brass 55

Solid brass body with hardened steel or brass (MB) shackle and precision pin tumbler, inner components made from non-corrosive materials.

**Keyed Alike (KA): +\$1.05 List Price**

Description	Key Options	Inner Pk	Item #	List Price
55/25 C KD	KD, KA	6	55311	\$6.81
55/30 C KD	KD	6	55411	\$9.33
55/30 KD	KD, KA	12	55415	\$9.33
55MB/30 C (brass shackle)	KD	6	56411	\$10.75
55MB/30 C KAx3 (brass shackle)	KA	6	56413	\$35.91
55/40 C KD	KD	6	55611	\$11.85
55/40 KD	KD, KA	12	55615	\$11.85
55/40 C KAx2	KA	12	55612	\$26.18
55MB/40 C KD (brass shackle)	KD, KA	6	56611	\$13.39
55MB/40 C KAx3 (brass shackle)	KA	6	56613	\$43.87
55MB/40 KAx10 (brass shackle)	KA	10	98005	\$147.77
55/40HB63 KD (2-7/16" shackle)	KD, KA	12	55636	\$12.50
55MB/40HB63 KD (2-7/16" brass shackle)	KD, KA	6	56641	\$14.51
55/45 C KD	KD	6	55711	\$13.93
55/45 KD	KD, KA	6	55715	\$13.93
55/50 C KD	KD	6	55811	\$17.99
55/50 KD	KD, KA	6	55815	\$17.99
55MB/50 C KD (brass shackle)	KD, KA	6	56811	\$19.53
55/60 C KD	KD, KA	6	55911	\$22.49

## Brass 65

Solid brass body, hardened steel shackle with NANO PROTECT™ coating and precision pin tumbler. Inner components made from non-corrosive materials.

**Keyed Alike (KA): +\$1.05 List Price**

Description	Key Options	Inner Pk	Item #	List Price
65/20 C KD	KD, KA	6	65211	\$6.58
65/40HB63 C KD ABUS	KD	6	65641	\$17.92
65/50 C KD	KD	6	65811	\$20.17
65/50HB80 C KD	KD	6	65861	\$22.11

## Weatherproof Brass

Solid brass body with hardened steel shackle, plus cylinder cover and drainage channels for protection against water and dirt. IB: Stainless steel shackle

Keyed Alike (KA): +\$1.05 List Price, Master Keyed (MK): +5.00 List Price				
Description	Key Options	Inner Pk	Item #	List Price
70/35 KD Black	KD	12	06050	\$14.45
70/35 KA Black	KA	12	06051	\$15.60
70/45 C KD Yellow	KD, KA	6	06110	\$17.46
70/45HB63 KD Yellow	KD, KA	6	06109	\$17.81
70IB/45 C KD Blue	KD, KA	6	06111	\$20.29
70IB/45 MK Blue	MK	6	06137	\$26.18
70IB/45 C KAx2 Blue	KA	6	06112	\$39.09
70IB/45HB63 KD Blue	KD	6	06135	\$25.83
70IB/45HB63 KA Blue	KA	6	06136	\$27.06
70IB/45HB63 MK Blue	MK	6	06138	\$31.73
70IB/50 C KD Blue	KD	6	06140	\$29.31
70IB/50 KA Blue	KA	6	06145	\$30.55
70IB/50 MK Blue	MK	6	06148	\$35.20



70/45



70IB/50

## Weatherproof 75

Solid brass, pearl-nickel-plated body with stainless steel shackle. High-precision reversible keyway with up to 168,000 key differs.

Keyed Alike (KA): +\$1.05 List Price				
Description	Key Options	Inner Pk	Item #	List Price
75/30 KD	KD	12	75100	\$13.96
75/40 KD	KD	12	75130	\$19.75
75/50 KD	KD	6	75160	\$22.20
75/60 KD	KD	6	75190	\$32.82
75IB/30 KD	KD	6	75101	\$18.58
75IB/40 KD	KD	6	75131	\$21.64
75IB/40HB40 KD	KD	6	75132	\$26.59
75IB/50 KD	KD	6	75161	\$29.60



75/40



75IB/40

## Dial Combination 78

Dial combination with preset 3-digit code, provides high protection against manipulation.

### Key Control Combination Padlock Policy

ABUS has in stock the Key Control Combination Padlock (product 78/50 KC KA) for immediate shipment. Please review the following information needed for shipment. Any missing information will delay the processing of your order.

### ORDERING INFORMATION

ABUS requires the following information to register each key-control system for each installation to ensure there is no duplication: full company name, address, ZIP code and telephone number of the school or ultimate user.

### INDICATE SYSTEM

Use the stamping on the control key and/or back of the Key Control Combination Padlock to specify which key-control system you are ordering. If you require a new system or a different one at the same installation, note "new key-control system required" on the order form. Include the number of control keys needed. ABUS reserves the right to contact the end user to verify information.

### CHARTS AND KEYS

For security purposes, we ship the Key Control Combination Padlock charts and control keys separately from the padlocks. Additional control keys are available at \$6.30 each.



78/50



78/50 KC

Description	Inner Pk	Item #	List Price
78/50 C Silver Dial	6	78811	\$8.49
78/50 C Red Dial	6	78812	\$8.49
78/50 C Blue Dial	6	78813	\$8.49
78/50 C Yellow Dial	6	78815	\$8.49
78/50 C Green Dial	6	78814	\$8.49
78/50 KC Key Control 507 Black Dial	6	78941	\$7.43
78/50 KC Key Control 507 Red Dial	12	78942	\$13.32
78/50 KC Key Control 507 Blue Dial	12	78943	\$13.32
78/50 KC Key Control 507 Yellow Dial	12	78944	\$13.32
78/50 KC Key Control 507 Green Dial	12	78945	\$13.32
78/50 KC KA Key Master Key	1	Custom	#N/A

## TITALIUM™

Solid TITALIUM™ aluminum alloy lock body for high security and low weight. Hardened steel shackle with NANO PROTECT™ coating. TITALIUM™ padlocks are an ideal alternative to brass.

### Keyed Alike (KA): +\$1.05 List Price

Description	Key Options	Inner Pk	Item #	List Price
54TI/30 C KD	KD, KA	6	65901	\$6.67
54TI/35 C KD	KD	6	65942	\$7.36
54TI/40 C KD	KD, KA	6	65905	\$8.97
64TI/20 C KD	KD, KA	6	65960	\$5.48
64TI/25 C KD	KD, KA	6	65975	\$6.07
64TI/30 C KD	KD	6	65982	\$7.90
64TI/30 C KA <sub>x2</sub>	KA	6	65940	\$19.81
64TI/40 C KD	KD, KA	6	65977	\$9.91
64TI/40 C KA <sub>x3</sub>	KA	6	65941	\$29.72
64TI/40HB40 C KD	KD, KA	6	65978	\$10.20
64TI/50 C KD	KD, KA	6	65984	\$15.92
80TI/40HB40 C KD	KD	4	65924	\$15.62
80TI/50 C KD	KD, KA	4	65936	\$20.11



54TI/30



64TI/40HB40



80TI/50



## Brass Monoblock 82

Solid brass lock body with hardened steel shackle and precision pin tumbler. Hardened steel pin protects narrow side of lock body from sawing.

### Keyed Alike (KA): +\$1.05 List Price

Description	Key Options	Inner Pk	Item #	List Price
82/63 KD	KD, KA	3	82605	\$30.72
82/70 KD	KD, KA	3	82705	\$33.55
82/90 KD	KD, KA	3	82905	\$53.01



82/90

## Rekeyable 83

The Locksmith's padlock of choice. Available in a variety of sizes, body and shackle materials and customizable to fit even the most specific needs. Patented features include easy shackle change, key-retaining to non-key-retaining z-bar, pinning window and chamber 6 access.

### 83 Series Service Charges

- Zero Bitted Standard (no additional charge)
- Keyed Different (KD) = + \$3.25 additional per lock\*
- Keyed Alike (KA) = + \$3.25 additional per lock\*
- Master Keyed (MK) = + \$5.00 additional per lock\*
- Extra Cut Key \$1.75 additional per key\*
- Extra 888 Cut Key \$2.15 additional per key\*
- Install Shackle \$1.50 additional per lock\*
- Custom laser engraving \$1 per lock up to 3 lines\*

\*net

### Keyed Different (KD) and Keyed Alike (KA): +\$3.25 List Price, Master Keyed (MK): +\$5.15 List Price

Description	Inner Pk	Item #	List Price
83AL/40-100 Blue Yale No. 8 (aluminum body)	6	84050	\$30.60
83AL/40-200 Blue Kwikset (aluminum body)	6	84051	\$30.60
83AL/40-200 Blue Kwikset® KD (aluminum body)	6	80201	\$29.96
83AL/40-200 Blue Kwikset® KA GR10 (aluminum body)	6	80202	\$33.79
83AL/40-300 Blue Schlage® C 6-5 KD (aluminum body)	6	80207	\$29.96
83AL/40-300 Blue Schlage® C 6-5 KA GR14 (aluminum body)	6	80208	\$33.79
83AL/40-300 Blue Schlage® C 6-5 (aluminum body)	6	84052	\$30.60
83AL/40-306 Blue Schlage C 6-Pin (aluminum body)	6	84053	\$30.60
83AL/40 Blue Schlage Everest Composite 6 Pin (aluminum body)	6	84109	\$30.60
83AL/40-400 Blue Corbin® 60, 59A1-A2, 59B1-B2 (aluminum body)	6	84056	\$30.60
83AL/40-410 Blue Corbin® L4 (aluminum body)	6	84057	\$30.60
83AL/40-700 Blue Sargent® LA-LC (aluminum body)	6	84058	\$30.60
83AL/40-800 Blue Weiser®-Falcon® (aluminum body)	6	84059	\$30.60
83AL/40-900 Blue Arrow® (aluminum body)	6	84060	\$30.60
83AL/40-1000 Blue Russwin® D1-D4 (aluminum body)	6	84061	\$30.60
83AL/40-3000 Blue Schlage C-L (aluminum body)	6	84062	\$30.60
83AL/40 Blue w/o cylinder (aluminum body)	6	84065	\$19.69
83AL/40 Blue w/o cylinder & w/o shackle (aluminum body)	6	84066	\$16.57
83AL/40-100 Red Yale No. 8 (aluminum body)	6	84070	\$30.60
83AL/40-200 Red Kwikset® KD (aluminum body)	6	80203	\$30.97
83AL/40-200 Red Kwikset® KA GR18 (aluminum body)	6	80204	\$33.79
83AL/40-200 Red Kwikset® (aluminum body)	6	84071	\$30.60
83AL/40-300 Red Schlage® C 6-5 KD (aluminum body)	6	80209	\$30.97
83AL/40-300 Red Schlage® C 6-5 KA GR11 (aluminum body)	6	80210	\$34.93
83AL/40-300 Red Schlage® C 6-5 (aluminum body)	6	84072	\$30.60
83AL/40-306 Red Schlage® C 6-Pin (aluminum body)	6	84073	\$30.60
83AL/40-323 Red Schlage Everest C123 6 Pin (aluminum body)	6	84074	\$30.60
83AL/40-345 Red Schlage Everest C145 6 Pin (aluminum body)	6	84075	\$30.60



83AL/40



83AL/40

## Rekeyable 83

**Keyed Different (KD) and Keyed Alike (KA): +\$3.25 List Price, Master Keyed (MK): +5.15 List Price**

Description	Inner Pk	Item #	List Price
83AL/40-400 Red Corbin® 60, 59A1-A2, 59B1-B2 (aluminum body)	6	84076	\$30.60
83AL/40-410 Red Corbin® L4 (aluminum body)	6	84077	\$30.60
83AL/40-700 Red Sargent® LA-LC (aluminum body)	6	84078	\$30.60
83AL/40-800 Red Weiser®-Falcon® (aluminum body)	6	84079	\$30.60
83AL/40-900 Red Arrow® (aluminum body)	6	84080	\$30.60
83AL/40-1000 Red Russwin® D1-D4 (aluminum body)	6	84081	\$30.60
83AL/40-3000 Red Schlage® C-L (aluminum body)	6	84082	\$30.60
83AL/40 Red w/o cylinder (aluminum body)	6	84085	\$19.69
83AL/40-100 Grey Yale® No. 8 (aluminum body)	6	84090	\$30.60
83AL/40-200 Grey Kwikset® KD (aluminum body)	6	80205	\$29.96
83AL/40-200 Grey Kwikset® KA GR13 (aluminum body)	6	80206	\$33.82
83AL/40-200 Grey Kwikset® (aluminum body)	6	84091	\$30.60
83AL/40-300 Grey Schlage® C 6-5 KD (aluminum body)	6	80211	\$29.96
83AL/40-300 Grey Schlage® C 6-5 KA GR15 (aluminum body)	6	80212	\$34.93
83AL/40-300 Grey Schlage® C 6-5 (aluminum body)	6	84092	\$30.60
83AL/40-306 Grey Schlage® C 6-Pin (aluminum body)	6	84093	\$30.60
83AL/40 Grey Schlage® Everest Composite 6 Pin (aluminum body)	6	84109	\$30.60
83AL/40-400 Grey Corbin® 60, 59A1-A2, 59B1-B2 (aluminum body)	6	84096	\$30.60
83AL/40-410 Grey Corbin® L4 (aluminum body)	6	84097	\$30.60
83AL/40-700 Grey Sargent® LA-LC (aluminum body)	6	84098	\$30.60
83AL/40-800 Grey Weiser®-Falcon® (aluminum body)	6	84099	\$30.60
83AL/40-900 Grey Arrow® (aluminum body)	6	84100	\$30.60
83AL/40-1000 Grey Russwin® D1-D4 (aluminum body)	6	84101	\$30.60
83AL/40-3000 Grey Schlage® C-L (aluminum body)	6	84102	\$30.60
83AL/40 Grey w/o cylinder (aluminum body)	6	84105	\$19.69
83AL/40-200 Green Kwikset® (aluminum body)	6	80225	\$29.96
83AL/40 Orange w/o cylinder (aluminum body)	6	840905	\$19.69
83AL/40 Black w/o cylinder (aluminum body)	6	84002	\$19.69
83AL/40 Yellow w/o cylinder (aluminum body)	6	84003	\$19.69
83AL/40 Purple w/o cylinder (aluminum body)	6	84004	\$19.69
83/40-100 Yale® No. 8 (brass body)	6	83302	\$41.03
83/40-200 Kwikset® (brass body)	6	83303	\$41.03
83/40-300 Schlage® C 6-5 (brass body)	6	83304	\$41.03
83/40-306 Schlage® C 6-Pin (brass body)	6	83305	\$41.03
83/40 Schlage® Everest Composite 6 Pin (brass body)	6	84110	\$41.03
83/40-400 Corbin® 60, 59A1-A2, 59B1-B2 (brass body)	6	83308	\$41.03
83/40-410 Corbin® L4 (brass body)	6	83309	\$41.03
83/40-700 Sargent® LA-LC (brass body)	6	83310	\$41.03
83/40-800 Weiser®-Falcon® (brass body)	6	83311	\$41.03
83/40-900 Arrow® (brass body)	6	83312	\$41.03
83/40-1000 Russwin® D1-D4 (brass body)	6	83313	\$41.03
83/40-3000 Schlage® C-L (brass body)	6	83314	\$41.03
83/40 w/o cylinder (brass body)	6	83280	\$24.99
83/40 w/o cylinder w/o shackle (brass body)	6	83319	\$23.79
83AL/45-100 Blue Yale® No. 8 (aluminum body)	6	83120	\$30.60
83AL/45-200 Blue Kwikset® KD (aluminum body)	6	80213	\$30.60
83AL/45-200 Blue Kwikset® KA (aluminum body)	6	80214	\$34.44
83AL/45-200 Blue Kwikset® (aluminum body)	6	83121	\$30.60



83AL/40



83/40

## Rekeyable 83

Keyed Different (KD) and Keyed Alike (KA): +\$3.25 List Price, Master Keyed (MK): +5.15 List Price			
Description	Inner Pk	Item #	List Price
83AL/45-300 Blue Schlage® C 6-Pin KD (aluminum body)	6	80219	\$30.60
83AL/45-300 Blue Schlage® C 6-Pin KA (aluminum body)	6	80220	\$34.44
83AL/45-300 Blue Schlage® C 6-5 (aluminum body)	6	83122	\$30.60
83AL/45-306 Blue Schlage® C 6-Pin (aluminum body)	6	83123	\$30.60
83AL/45 Blue Schlage® Everest Composite 6 Pin (aluminum body)	6	83411	\$30.60
83AL/45-400 Blue Corbin® 60, 59A1-A2, 59B1-B2 (aluminum body)	6	83125	\$30.60
83AL/45-410 Blue Corbin® L4 (aluminum body)	6	83126	\$30.60
83AL/45-700 Blue Sargent® LA-LC (aluminum body)	6	83127	\$30.60
83AL/45-800 Blue Weiser®-Falcon® (aluminum body)	6	83128	\$30.60
83AL/45-900 Blue Arrow® (aluminum body)	6	83129	\$30.60
83AL/45-1000 Blue Russwin® D1-D4 (aluminum body)	6	83130	\$30.60
83AL/45-3000 Blue Schlage® C-L (aluminum body)	6	83131	\$30.60
83AL/45-M1 Blue Master® M1 (aluminum body)	6	83132A	\$36.68
83AL/45 Blue w/o cylinder (aluminum body)	6	83122A	\$20.34
83AL/45-100 Brown Yale® No. 8 (aluminum body)	6	83135	\$30.60
83AL/45-200 Brown Kwikset® (aluminum body)	6	83136	\$30.60
83AL/45-300 Brown Schlage® C 6-5 (aluminum body)	6	83137	\$30.60
83AL/45-306 Brown Schlage® C 6-Pin (aluminum body)	6	83138	\$30.60
83AL/45 Brown Schlage® Everest Composite 6 Pin (aluminum body)	6	84112	\$30.60
83AL/45-400 Brown Corbin® 60, 59A1-A2, 59B1-B2 (aluminum body)	6	83140	\$30.60
83AL/45-410 Brown Corbin® L4 (aluminum body)	6	83141	\$30.60
83AL/45-700 Brown Sargent® LA-LC (aluminum body)	6	83142	\$30.60
83AL/45-800 Brown Weiser®-Falcon® (aluminum body)	6	83143	\$30.60
83AL/45-900 Brown Arrow® (aluminum body)	6	83144	\$30.60
83AL/45-1000 Brown Russwin® D1-D4 (aluminum body)	6	83145	\$30.60
83AL/45-3000 Brown Schlage® C-L (aluminum body)	6	83146	\$30.60
83AL/45-6000 Brown Master® W6000 (aluminum body)	6	83147	\$30.60
83AL/45-M1 Brown Master® M1 (aluminum body)	6	83147A	\$30.60
83AL/45 Brown w/o cylinder (aluminum body)	6	83137A	\$20.34
83AL/45-323 Silver (aluminum body)	6	83149	\$30.60
83AL/45-100 Silver Yale® No. 8 (aluminum body)	6	83150	\$30.60
83AL/45-200 Silver Kwikset® (aluminum body)	6	83151	\$30.60
83AL/45-300 Silver Schlage® C 6-5 (aluminum body)	6	83152	\$30.60
83AL/45-306 Silver Schlage® C 6-Pin (aluminum body)	6	83153	\$30.60
83AL/45 Silver Schlage® Everest Composite 6 Pin (aluminum body)	6	84113	\$30.60
83AL/45-400 Silver Corbin® 60, 59A1-A2, 59B1-B2 (aluminum body)	6	83155	\$30.60
83AL/45-410 Silver Corbin® L4 (aluminum body)	6	83156	\$30.60
83AL/45-700 Silver Sargent® LA-LC (aluminum body)	6	83157	\$30.60
83AL/45-800 Silver Weiser®-Falcon® (aluminum body)	6	83158	\$30.60
83AL/45-900 Silver Arrow® (aluminum body)	6	83159	\$30.60
83AL/45-1000 Silver Russwin® D1-D4 (aluminum body)	6	83160	\$30.60
83AL/45-3000 Silver Schlage® C-L (aluminum body)	6	83161	\$30.60
83AL/45-M1 Silver Master® M1 (aluminum body)	6	83162A	\$30.60
83AL/45 Silver w/o cylinder (aluminum body)	6	83152A	\$20.34
83AL/45-100 Red Yale® No. 8 (aluminum body)	6	83107	\$30.60
83AL/45-200 Red Kwikset® KD (aluminum body)	6	80215	\$30.60
83AL/45-200 Red Kwikset® KA (aluminum body)	6	80216	\$34.44
83AL/45-200 Red Kwikset® (aluminum body)	6	83108	\$30.60



83AL/45



83AL/45



83AL/45

Security

Safety Lockout

Key Blanks

General Information



83AL/45



83AL/45



83/45

## Rekeyable 83

**Keyed Different (KD) and Keyed Alike (KA): +\$3.25 List Price, Master Keyed (MK): +\$5.15 List Price**

Description	Inner Pk	Item #	List Price
83AL/45-300 Red Schlage® C 6-Pin KD (aluminum body)	6	80221	\$31.64
83AL/45-300 Red Schlage® C 6-Pin KA (aluminum body)	6	80222	\$34.44
83AL/45-300 Red Schlage® C 6-5 (aluminum body)	6	83109	\$30.60
83AL/45-306 Red Schlage® C 6-Pin (aluminum body)	6	83110	\$30.60
83AL/45-345 Red Schlage® Everest Composite 6 Pin (aluminum body)	6	84123	\$30.60
83AL/45-400 Red Corbin® 60, 59A1-A2, 59B1-B2 (aluminum body)	6	83112	\$30.60
83AL/45-410 Red Corbin® L4 (aluminum body)	6	83113	\$30.60
83AL/45-700 Red Sargent® LA-LC (aluminum body)	6	83114	\$30.60
83AL/45-800 Red Weiser®-Falcon® (aluminum body)	6	83115	\$30.60
83AL/45-900 Red Arrow® (aluminum body)	6	83116	\$30.60
83AL/45-1000 Red Russwin® D1-D4 (aluminum body)	6	83117	\$30.60
83AL/45-3000 Red Schlage® C-L (aluminum body)	6	83118	\$30.60
83AL/45 Red w/o cylinder (aluminum body)	6	83103	\$20.34
83AL/45 Red w/o cylinder & w/o shackle (aluminum body)	6	83103B	\$19.05
83AL/45-100 Green Yale® No. 8 (aluminum body)	6	83170	\$30.60
83AL/45-200 Green Kwikset® (aluminum body)	6	83171	\$30.60
83AL/45-300 Green Schlage® C 6-5 (aluminum body)	6	83172	\$30.60
83AL/45-306 Green Schlage® C 6-Pin (aluminum body)	6	83173	\$30.60
83AL/45 Schlage® Everest Composite 6 Pin Alum. Body	6	84122	\$30.60
83AL/45-400 Green Corbin® 60, 59A1-A2, 59B1-B2 (aluminum body)	6	83175	\$30.60
83AL/45-410 Green Corbin® L4 (aluminum body)	6	83176	\$30.60
83AL/45-700 Green Sargent® LA-LC (aluminum body)	6	83177	\$30.60
83AL/45-800 Green Weiser®-Falcon® (aluminum body)	6	83178	\$30.60
83AL/45-900 Green Arrow® (aluminum body)	6	83179	\$30.60
83AL/45-1000 Green Russwin® D1-D4 (aluminum body)	6	83180	\$30.60
83AL/45-3000 Green Schlage® C-L (aluminum body)	6	83181	\$29.57
83AL/45 Green w/o cylinder (aluminum body)	6	83172A	\$20.34
83AL/45-200 Grey Kwikset® KD (aluminum body)	6	80217	\$31.64
83AL/45-200 Grey Kwikset® KA (aluminum body)	6	80218	\$34.44
83AL/45-300 Grey Schlage® C 6-5 KD (aluminum body)	6	80223	\$30.60
83AL/45-300 Grey Schlage® C 6-5 KA (aluminum body)	6	80224	\$34.44
83AL/45-200 Grey w/o cylinder (aluminum body)	6	83102	\$20.34
83AL/45-800 Yellow Weiser®-Falcon® (aluminum body)	6	83166	\$30.60
83AL/45-800 Orange Weiser®-Falcon® (aluminum body)	6	83167	\$30.60
83AL/45-300 Purple Schlage® C 6-5 (aluminum body)	6	83187	\$30.60
83AL/45-800 Purple Weiser®-Falcon® (aluminum body)	6	83193	\$30.60
83/45-100 Yale® No. 8 (brass body)	6	83618	\$42.06
83/45-200 Kwikset® (brass body)	6	83628	\$42.06
83/45-300 Schlage® C 6-5 Loaded (brass body)	6	83638	\$42.06
83/45-306 Schlage® C 6-Pin (brass body)	6	83636	\$42.06
83/45 Schlage® Everest Composite 6 Pin (brass body)	6	84114	\$42.06
83/45-400 Corbin® 60, 59A1-A2, 59B1-B2 (brass body)	6	83648	\$42.06
83/45-410 Corbin® L4 (brass body)	6	83645	\$42.06
83/45-700 Sargent® LA-LC (brass body)	6	83658	\$42.06
83/45-800 Weiser®-Falcon® (brass body)	6	83668	\$42.06
83/45-900 Arrow® (brass body)	6	83678	\$42.06
83/45-1000 Russwin® D1-D4 (brass body)	6	83688	\$42.06
83/45-3000 Schlage® C-L (brass body)	6	83698	\$42.06



## Rekeyable 83

Keyed Alike (KA): +\$3.00 List Price, Master Keyed (MK): +4.75 List Price			
Description	Case Pk	Item #	List Price
83/45-6000 Master® W6000 (brass body)	6	83700	\$42.06
83/45-M1 Master® M1 (brass body)	6	83701	\$42.06
83/45 w/o cylinder (brass body)	6	83350	\$25.97
83/45 w/o shackle 300 Schlage® (brass body)	6	83351	\$38.59
83/45 w/o cylinder & w/o shackle (brass body)	6	990345	\$22.43
83KnK/45 w/Adaptors	6	83203	\$32.92
83KnK/45 SGT (Sargent) w/adaptors w/o cylinder (brass body)	6	83207	\$32.92
83CS/45-100 Yale® No. 8 (brass body)	6	83210	\$51.94
83CS/45-200 Kwikset® (brass body)	6	83211	\$51.94
83CS/45-300 Schlage® C 6-5 (brass body)	6	83212	\$51.94
83CS/45-306 Schlage® C 6-pin (brass body)	6	83213	\$51.94
83CS/45 Schlage® Everest Composite 6 Pin (brass body)	6	84115	\$51.94
83CS/45-323 (brass body)	6	83214	\$51.94
83CS/45-400 Corbin® 60, 59A1-A2, 59B1-B2 (brass body)	6	83215	\$51.94
83CS/45-410 Corbin® L4 (brass body)	6	83216	\$51.94
83CS/45-700 Sargent® LA-LC (brass body)	6	83217	\$51.94
83CS/45-800 Weiser®-Falcon® (brass body)	6	83218	\$51.94
83CS/45-900 Arrow® (brass body)	6	83219	\$51.94
83CS/45-1000 Russwin® D1-D4 (brass body)	6	83220	\$51.94
83CS/45-3000 Schlage® C-L (brass body)	6	83221	\$51.94
83CS/45-6000 Master® W6000 (brass body)	6	83223	\$51.94
83CS/45-M1 Master® M1 (brass body)	6	83223A	\$51.94
83CS/45 w/o cylinder (brass body)	6	83210A	\$35.79
83/50-100 Yale® No. 8 (brass/chrome body)	6	83518	\$53.08
83/50-200 Kwikset® (brass/chrome body)	6	83528	\$53.08
83/50-300 Schlage® C 6-5 (brass/chrome body)	6	83538	\$53.08
83/50-306 Schlage® C 6-pin (brass/chrome body)	6	83536	\$53.08
83/50 Schlage® Everest Composite 6 Pin (brass/chrome body)	6	83543	\$53.08
83/50-400 Corbin® 60, 59A1-A2, 59B1-B2 (brass/chrome body)	6	83548	\$53.08
83/50-410 Corbin® L4 (brass/chrome body)	6	83549	\$53.08
83/50-800 Weiser®-Falcon® (brass/chrome body)	6	83568	\$53.08
83/50-1000 Russwin® D1-D4 (brass/chrome body)	6	83588	\$53.08
83/50-3000 Schlage® C-L (brass/chrome body)	6	83598	\$53.08
83/50 w/o cylinder (brass/chrome body)	6	83517	\$36.69
83KnK/50 w/adaptors	6	83204	\$43.48
83CS/50-100 Yale® No. 8 6-pin (brass/chrome body)	6	83225	\$65.33
83CS/50-300 Schlage® C 6-5 (brass/chrome body)	6	83227	\$65.33
83CS/50-306 Schlage® C 6-pin (brass/chrome body)	6	83228	\$65.33
83CS/50 Schlage® Everest Composite 6 Pin (brass/chrome body)	6	84117	\$65.33
83CS/50-400 Corbin® 60, 59A1-A2, 59B1-B2 (brass/chrome body)	6	83230	\$65.33
83CS/50-410 Corbin® L4 (brass/chrome body)	6	83231	\$65.33
83CS/50-700 Sargent® LA-LC (brass/chrome body)	6	83232	\$65.33
83CS/50-800 Weiser®-Falcon® (brass/chrome body)	6	83233	\$65.33
83CS/50-900 Arrow® (brass/chrome body)	6	83234	\$65.33
83CS/50-1000 Russwin® D1-D4 (brass/chrome body)	6	83235	\$65.33
83CS/50-3000 Schlage® C-L (brass/chrome body)	6	83236	\$65.33
83CS/50 w/o cylinder (brass/chrome body)	6	83225A	\$49.00
83/55-100 Yale® No. 8 (hardened steel body)	6	83810	\$67.31



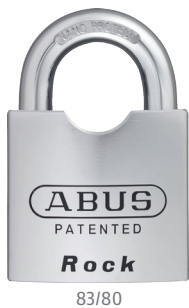
83CS/45



83/50



83CS/50



## Rekeyable 83

Keyed Different (KD) and Keyed Alike (KA): +\$3.25 List Price, Master Keyed (MK): +\$5.15 List Price			
Description	Inner Pk	Item #	List Price
83/55-200 Kwikset® (hardened steel body)	6	83820	\$67.31
83/55-300 Schlage® C 6-5 (hardened steel body)	6	83830	\$67.31
83/55-306 Schlage® C 6-pin (hardened steel body)	6	83836	\$67.31
83/55 Schlage® Everest Composite 6 Pin (hardened steel body)	6	84118	\$67.31
83/55-400 Corbin® 60, 59A1-A2, 59B1-B2 (hardened steel body)	6	83840	\$67.31
83/55-410 Corbin® L4 (hardened steel body)	6	83845	\$67.31
83/55-700 Sargent® LA-LC (hardened steel body)	6	83850	\$69.59
83/55-800 Weiser®-Falcon® (hardened steel body)	6	83860	\$67.31
83/55-900 Arrow® (hardened steel body)	6	83870	\$67.31
83/55-1000 Russwin® D1-D4 (hardened steel body)	6	83880	\$67.31
83/55-3000 Schlage® C-L (hardened steel body)	6	83890	\$67.31
83/55 w/o cylinder (hardened steel body)	6	83810A	\$52.91
83/55 w/o shackle Schlage® (hardened steel body)	6	83810B	\$60.69
83/55 w/o cylinder & w/o shackle (hardened steel body)	6	83810C	\$45.06
83KnK/55 w/adaptors	6	83205	\$57.69
83CS/55-100 Yale® No. 8 (hardened steel body)	6	83240	\$78.27
83CS/55-200 Kwikset® (hardened steel body)	6	83241	\$75.71
83CS/55-300 Schlage® C 6-5 (hardened steel body)	6	83242	\$75.71
83CS/55-306 Schlage® C 6-pin (hardened steel body)	6	83243	\$78.27
83CS/55 Schlage® Everest Composite 6-Pin (hardened steel body)	6	84119	\$65.33
83CS/55-400 Corbin® 60, 59A1-A2, 59B1-B2 (hardened steel body)	6	83245	\$78.27
83CS/55-410 Corbin® L4 (hardened steel body)	6	83246	\$78.27
83CS/55-700 Sargent® LA-LC (hardened steel body)	6	83247	\$78.27
83CS/55-800 Weiser®-Falcon® (hardened steel body)	6	83248	\$78.27
83CS/55-900 Arrow® (hardened steel body)	6	83249	\$78.27
83CS/55-1000 Russwin® D1-D4 (hardened steel body)	6	83250	\$78.27
83CS/55-3000 Schlage® C-L (hardened steel body)	6	83251	\$75.71
83CS/55 w/o cylinder (hardened steel body)	6	83260	\$61.31
83/80-100 Yale® No. 8 (hardened steel body)	3	83811	\$158.66
83/80-200 Kwikset® (hardened steel body)	3	83822	\$158.66
83/80-300 Schlage® C 6-5 (hardened steel body)	3	83823	\$164.03
83/80-306 Schlage® C 6-pin (hardened steel body)	3	83832A	\$158.66
83/80 Blue Schlage® Everest Composite 6 Pin (hardened steel body)	3	84120	\$158.66
83/80-400 Corbin® 60, 59A1-A2, 59B1-B2 (hardened steel body)	3	83841	\$158.66
83/80-410 Corbin® L4 (hardened steel body)	3	83842	\$158.66
83/80-700 Sargent® (hardened steel body)	3	83851	\$158.66
83/80-800 Weiser®-Falcon® (hardened steel body)	3	83861	\$158.66
83/80-900 Arrow® (hardened steel body)	3	83871	\$158.66
83/80-1000 Russwin® (hardened steel body)	3	83881	\$158.66
83/80-3000 Schlage® C-L (hardened steel body)	6	83892	\$158.66
83/80 w/o cylinder (hardened steel body)	6	83894	\$144.20
83WP/53-100 Yale® No. 8 (hardened steel body)	6	83920	\$39.67
83WP/53-200 Kwikset® (hardened steel body)	6	83922	\$39.67
83WP/53-300 Schlage® C 6-5 (hardened steel body)	6	83923	\$39.67
83WP/53-306 Schlage® C 6-pin (hardened steel body)	6	83923A	\$39.67
83WP/53 Schlage® Everest Composite 6 Pin (hardened steel body)	6	83925A	\$39.67
83WP/53-400 Corbin® 60, 59A1-A2, 59B1-B2 (hardened steel body)	6	83926	\$39.67
83WP/53-410 Corbin® L4 (hardened steel body)	6	83927	\$39.67

## Rekeyable 83

Keyed Alike (KA): +\$3.00 List Price, Master Keyed (MK): +4.75 List Price			
Description	Case Pk	Item #	List Price
83WP/53-700 Sargent® (hardened steel body)	6	83928	\$39.67
83WP/53-800 Weiser®-Falcon® (hardened steel body)	6	83979	\$39.67
83WP/53-900 Arrow® (hardened steel body)	6	83930	\$39.67
83WP/53-1000 Russwin® (hardened steel body)	6	83921	\$39.67
83WP/53-3000 Schlage® C-L (hardened steel body)	6	83931	\$39.67
83WP/53 w/o cylinder (hardened steel body)	6	83919	\$25.37
83WP/53 w/o shackle (specify keyway) (hardened steel body)	6	83919A	\$36.55
83WP/53 w/o cylinder & w/o shackle (hardened steel body)	6	83919B	\$22.25
83WP-KnK/53 w/adaptors	6	83601	\$37.44
83WP-KnK/53HB-63 w/adaptors	6	83602	\$38.83
83MAR/45-300 Schlage® 6-5 (pearl nickel plated brass body)	6	990396	\$40.14
83WP-IB/53-300 C KD Schlage® C 6-5 (chrome plated brass body)	6	83271	\$74.54
83WP-IB/53-300 C KA Schlage® C 6-5 (chrome plated brass body)	6	83270	\$78.27
83 100 Yale® No. 8 (brass cylinder only)	6	83010	\$16.05
83 200 Kwikset® (brass cylinder only)	6	83020	\$16.05
83 300 Schlage® C 6-5 (loaded brass cylinder only)	6	83030	\$16.05
83 306 Schlage® C 6-Pin (brass cylinder only)	6	83036	\$16.05
83 RK Schlage® Everest Composite 6-Pin (brass cylinder only)	6	83033B	\$16.05
83 400 Corbin® 60, 59A1-A2, 59B1-B2 (brass cylinder Only)	6	83040	\$16.05
83 410 Corbin® L4 (brass cylinder only)	6	83045	\$16.05
83 700 Sargent® LA-LC (rass cylinder only)	6	83070	\$16.05
83 800 Weiser®-Falcon® (brass cylinder only)	6	83080	\$16.05
83 888 KD (brass cylinder only - pinning, charting and key cutting)	6	83085	\$16.05
83 888 KA (brass cylinder only - pinning, charting and key cutting)	6	83086	\$16.05
83 888 MK (brass cylinder only - pinning, charting and key cutting)	6	83087	\$16.05
83 900 Arrow® (brass cylinder only)	6	83090	\$16.05
83 1000 Russwin® D1-D4 (brass cylinder only)	6	83100	\$16.05
83 3000 Schlage® C-L (brass cylinder only)	6	83300	\$16.05



83WP/53



83MAR/45



83WP-IB/53



100 Cylinder



200 Cylinder



300 Cylinder

Security

Safety Lockout

Key Blanks

## 83 SFIC

All the features of the standard 83 Series padlocks, specifically manufactured to accept 6- and 7-pin SFIC cylinders.

Description	Inner Pk	Item #	List Price
83AL-IC/40 Blue (aluminum body, 1" hardened steel shackle)	6	84010	\$18.02
83AL-IC/40HB38 Blue (aluminum body, 1-1/2" hardened steel shackle)	6	84011	\$19.47
83AL-IC/40HB75 Blue (aluminum body, 3" hardened steel shackle)	6	84012	\$20.92
83AL-IC/40HB100 Blue (aluminum body, 4" hardened steel shackle)	6	84013	\$18.00
83AL-IC/40 Red (aluminum body, 1" hardened steel shackle)	6	84015	\$18.02
83AL-IC/40HB38 Red (aluminum body, 1-1/2" hardened steel shackle)	6	84016	\$19.47
83AL-IC/40HB75 Red (aluminum body, 3" hardened steel shackle)	6	84017	\$21.62
83AL-IC/40 Grey (aluminum body, 1" hardened steel shackle)	6	84020	\$18.02
83AL-IC/40HB38 Grey (aluminum body, 1-1/2" hardened steel shackle)	6	84021	\$19.47
83AL-IC/40HB75 Grey (aluminum body, 3" hardened steel shackle)	6	84022	\$20.92
83AL-IC/40HB100 Grey (aluminum body, 4" hardened steel shackle)	6	84023	\$21.64
83IC/45 (brass body, 1" hardened steel shackle)	6	83718	\$29.85
83IC/45HB50 (brass body, 2" hardened steel shackle)	6	83738	\$31.57



83AL-IC/40



83AL-IC/40

General Information



83IC/45



83IC/50



83WP-IC/53

## 83 SFIC

Description	Case Pk	Item #	List Price
83IC/45HB75 (brass body, 3" hardened steel shackle)	6	83748	\$33.30
83IC/45HB100 (brass body, 4" hardened steel shackle)	6	83778	\$35.14
83IC/45HB150 (brass body, 6" hardened steel shackle)	6	83708	\$38.71
83IC/45 (brass body, 1" stainless steel shackle)	6	83791	\$34.45
83IC/45HB50 (brass body, 2" stainless steel shackle)	6	83792	\$36.06
83IC/45HB75 (brass body, 3" stainless steel shackle)	6	83793	\$37.67
83IC/50 (brass/nickel body, 1" special alloy shackle)	6	83795	\$46.01
83IC/50HB50 (brass/nickel body, 2" special alloy shackle)	6	83796	\$49.00
83IC/50HB75 (brass/nickel body, 3" special alloy shackle)	6	83797	\$50.39
83IC/50HB100 (brass/nickel body, 4" special alloy shackle)	6	83801	\$51.70
83CS IC/55 (hardened steel body, 1" special alloy shackle)	6	83800	\$74.54
83WP-IC/53 (hardened steel body, 1" shackle)	6	83608	\$32.21
83WP-IC/53HB-63 (hardened steel body, 2-1/2" shackle)	6	83609	\$34.05
83WP-IC/53HB-75 (hardened steel body, 3" shackle)	6	83610	\$34.71
83WP-IC/63 (hardened steel body, 1" shackle)	6	83612	\$43.28
83WP-IC/63HB-63 (hardened steel body, 2-1/2" shackle)	6	83613	\$45.23

## 83 LFIC

All the features of the 83 Series padlocks, specifically manufactured to accept LFIC Schlage cylinders.

Description	Inner Pk	Item #	List Price
83S/45 LFIC SCHLG (hardened steel body, 1 3/16" shackle)	6	83606	\$34.88
83S/45 LFIC SCHLG (hardened steel body w/o shackle)	6	83623	\$31.38
83WP-IC/53 LF-SCHLG (hardened steel body, 1" shackle)	6	83607	\$37.16
83WP-IC/53 LF-SCHLG (hardened steel body w/o shackle)	6	83607A	\$33.66



83S/45

## 83 Series Shackles, Accessories and Parts

Description	Inner Pk	Item #	List Price
1" special alloy shackle only 83/40's	1	84046	\$2.53
1-1/2" special alloy shackle only 83/40's	1	84047	\$2.93
3" special alloy shackle only 83/40's	1	84048	\$4.37
4" special alloy shackle only 83/40's	1	84049	\$5.00
8001-1" special alloy shackle only 83/45's	1	83001	\$5.29
8002-2" special alloy shackle only 83/45's	1	83002	\$7.25
8003-3" special alloy shackle only 83/45's	1	83003	\$9.72
8004-4" special alloy shackle only 83/45's	1	83004	\$11.73
8009-6" special alloy shackle only 83/45's	1	83413	\$14.09
8005-1" brass shackle only 83/45's	1	83005	\$8.68
8006-2" brass shackle only 83/45's	1	83006	\$10.70
8007-3" brass shackle only 83/45's	1	83007	\$12.42
8008-4" brass shackle only 83/45's	1	83008	\$15.47
8011-1" stainless steel shackle only 83/45's	1	83011	\$10.87
8012-2" stainless steel shackle only 83/45's	1	83018	\$12.83
8013-3" stainless steel shackle only 83/45's	1	83019	\$16.05
8014-4" stainless steel shackle only 83/45's	1	83022	\$16.79
8015-1" special alloy shackle only 83/50's	1	83014	\$8.97
8016-2" special alloy shackle only 83/50's	1	83013	\$10.52
8060-3" special alloy shackle only 83/50's	1	83415	\$14.09



6" Shackle



## 83 Series Shackles, Accessories and Parts

Description	Case Pk	Item #	List Price
8019-4" special alloy shackle only 83/50's	1	83360	\$18.58
8020-1" brass shackle only 83/50's	1	83361	\$10.70
8021-2" brass shackle only 83/50's	1	83362	\$12.71
8022-3" brass shackle only 83/50's	1	83363	\$14.49
8023-4" brass shackle only 83/50's	1	83364	\$16.45
8024-1" stainless steel shackle only 83/50's	1	83430	\$12.14
8025-2" stainless steel shackle only 83/50's	1	83365	\$14.15
8026-3" stainless steel shackle only 83/50's	1	83366	\$16.10
8027-4" stainless steel shackle only 83/50's	1	83367	\$17.94
83WP 1-1/16" special alloy shackle only for 83WP/53 & 83S/45 LFIC	1	83915	\$6.44
83WP 2-1/2" special alloy shackle only for 83WP/53 & 83S/45 LFIC	1	83916	\$8.97
83WP 3" special alloy shackle only for 83WP/53 & 83S/45 LFIC	1	83917	\$11.56
83WP 4" special alloy shackle only for 83WP/53 & 83S/45 LFIC	1	83918	\$14.15
8060-1" special alloy shackle only 83/55's	1	83416	\$8.68
8061-1-7/16" special alloy shackle only 83/55's	1	83015	\$14.09
8063-3" special alloy shackle only 83/55's	1	83417	\$15.36
83 KnK brass adaptor pack	1	83209H	\$26.34
83 KnK chrome adaptor pack	1	83209I	\$5.30
83 KnK Schlage® adaptor only (12/bag)	1	83209J	\$14.51
83 KnK Medeco® adaptor only (12/bag)	1	83209K	\$8.23
83 KnK Lori®/Sargent® adaptor only (12/bag)	1	83209L	\$8.23
83 KnK brass bible only (12/bag)	1	83209E	\$24.39
83 KnK chrome bible only (12/bag)	1	83209F	\$28.34
83 KnK Sargent® brass bible only (12/bag)	1	83209G	\$24.39
83IC core adaptor pack	1	83737	\$3.57
83 Mul-T/Schlage LFIC drop in dr (12/bag)	1	83209N	\$24.85
8303 83SK2 Series Service Kit	1	83000A	\$509.49
8303 83SK2 Series Service Kit (less padlocks)	1	83000B	\$216.54
83AL/40 Weatherproof Cap	1	83433	\$4.60
83/45-50 Weather Proof Cap	1	83409	\$5.12
83/55 Weather Proof Cap	1	83431	\$6.10
83 Shackle Collar 5/16" Diameter (83/45 & 83WP/53)	1	990229	\$2.35
83 Shackle Collar 3/8" diameter (83/50)	1	990230	\$2.35
83 Shackle Collar 7/16" diameter (83/55 & 83WP/63)	1	990231	\$2.35
8341 12" Sash Chain	1	83910	\$4.72
8342 1/4" collar for Sash Chain	1	83911	\$1.22
8343 5/16" collar for Sash Chain	1	83912	\$1.32
8344 3/8" collar for Sash Chain	1	83913	\$1.32
8345 7/16" collar for Sash Chain	1	83914	\$1.21
83 (5 to 6 pin cylinder conversion parts)	1	83208	\$0.40
8325A premium Shackle Change Tool	1	83414A	\$16.57
8311 oval locking ball 83/40 only	1	84040	\$0.69
8309 locking ball 83/45-50, 83WP/53	1	83401	\$0.75
8310 locking ball 83/55, 83WP/63	1	83411	\$0.75
8312 cylinder retaining screw	1	83403	\$0.69
8342 shackle spring 83/40	1	84043	\$0.69
8315 shackle spring 83/45, 83/50	1	83405	\$0.75
8320 shackle spring 83/55	1	83412	\$0.75



KNK Brass Adaptor Pack



Weatherproof Cap



Shackle Change Tool

## Weatherproof 84IB

Nickel-plated brass lock body with stainless steel shackle and precision pin tumbler. 100% rust-resistant for outdoor use.



84IB/50

Description	Key Options	Inner Pk	Item #	
84IB/40 C KD	KD	6	85101	\$16.80
84IB/40 C KAx2	KA	6	85102	\$36.09
84IB/50 C KD	KD	6	85105	\$23.47
84IBHB/50 C KD	KD	6	85106	\$24.41

## Weatherproof Brass T84MB

Corrosion-resistant solid brass lock body with brass shackle and precision pin tumbler.

### Keyed Alike (KA): +\$1.05 List Price



T84MB/30

Description	Key Options	Inner Pk	Item #	List Price
T84MB/30 C KD Black	KD, KA	6	85411	\$11.91
T84MB/30 C KAx3 Black	KA	4	85413	\$39.45
T84MB/40 C KD Blue	KD	6	85611	\$14.91
T84MB/40 KD Blue	KD, KA	6	85951	\$14.91
T84MB/40 KD Black	KD, KA	6	85611A	\$14.91
T84MB/40 KD Green	KD, KA	6	85952	\$14.91
T84MB/40 KD Grey	KD, KA	6	85954	\$14.91
T84MB/40 KD Red	KD, KA	6	85950	\$14.91
T84MB/40 KD Yellow	KD, KA	6	85953	\$14.91
T84MB/50 C KD Black	KD, KA	6	85811	\$22.41

## Brass 85

Solid brass body with hardened steel shackle with NANO PROTECT™ coating and precision pin tumbler. Inner components made from non-corrosive materials.

### Keyed Alike (KA): +\$1.05 List Price, Master Keyed (MK): +\$5.00 List Price



85/40HB63

Description	Key Options	Inner Pk	Item #	List Price
85/40 KD	KD, KA, MK	6	87615	\$17.79
85/40HB63 KD (2-1/2" shackle)	KD, KA, MK	3	87056	\$19.30
85/50 KD	KD	3	87815	\$24.40
85/50 KA 1084	KA	3	87846	\$25.53
85/50HB80 KD (3-1/8" shackle)	KD, KA, MK	3	87825	\$26.71

## Brass 88

Solid brass body with hardened steel shackle. Features an ABUS-Plus disk cylinder which provide the highest protection against manipulation.

### Keyed Alike (KA): +\$1.05 List Price



88/50

Description	Key Options	Inner Pk	Item #	List Price
88/40 C KD	KD	6	88611	\$45.04
88/40 KD	KD, KA	6	88615	\$45.04
88/50 C KD	KD	6	88811	\$66.28
88/50 KD	KD, KA	6	88815	\$61.66

## Steel Monoblock 92

Solid brass lock body with steel jacket, hardened steel shackle with NANO PROTECT™ coating and precision pin tumbler.

### Keyed Alike (KA): +\$1.05 List Price

Description	Key Options	Inner Pk	Item #	List Price
92/65 KD	KD	3	82955	\$68.11
92/65 KA	KA	3	82956	\$69.26
92/80 KD	KD, KA	3	82958	\$82.80



92/80

## Hardened Steel Monoblock 93RK

Hardened steel body and shackle with NANO PROTECT™ coating and precision pin tumbler. Cylinder can be replaced and rekeyed; lock accepts all cylinders from the ABUS 83 Series®.

### Keyed Alike (KA): +\$1.05 List Price

Description	Inner Pk	Item #	List Price
93RK/100 KD	3	18109	\$137.80



93RK/100

## Industrial Hasps

Security hasps are designed to complement ABUS locks to secure double doors, sliding doors and other storage containers.

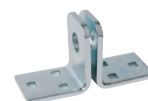
Description	Inner Pk	Item #	List Price
100/60 C 2-3/8" Concealed Hinge Pin Hasp	6	01500	\$7.62
100/80 C 3-1/4" Concealed Hinge Pin Hasp	6	01501	\$13.06
110/155 C 6-1/4" Concealed Hinge Pin Hasp	3	01191	\$16.51
110/195 C 7-3/4" Concealed Hinge Pin Hasp	3	01101	\$21.94
110/230 C 9" Concealed Hinge Pin Hasp	3	01102	\$23.37
115/100 C Fixed Staple Hasp	6	12701	\$12.94
125/150 C Hardened Steel 6-1/2" Hasp	1	01250	\$76.30
130/180 B-BLT Iron Hasp 6-1/8" Hasp	1	01300	\$150.57
140/120 C 4-3/4" Stainless Steel Hasp	3	01481	\$23.48
140/190 C 7-1/2" Stainless Steel Hasp	3	01401	\$30.67
141/200 C KD Diskus Integral Hasp Black w/ 26/70 Diskus	1	01485	\$99.57
141/200 C KD Diskus Integral Hasp White w/ 26/70 Diskus	1	01486	\$99.57
141/200 Integral Hasp only - Black	1	01485A	\$68.52
141/200 Integral Hasp only - White	1	01486A	\$68.52
200/75 C 3" Hardened Hasp	6	02051	\$5.54
200/95 C 3-3/4" Hardened Hasp	6	02061	\$7.62
200/115 C 4-1/2" Hardened Hasp	6	02081	\$9.33
200/135 C 5-1/4" Hardened Hasp	6	02091	\$11.35
200/155 C 6-1/2" Hardened Hasp	6	02001	\$12.46
300/100 C 3-15/16" Hardened Hasp	6	01550	\$33.95
300/120 C 4-3/4" Hardened Hasp	3	01551	\$42.40
300/140 C 5-1/2" Hardened Hasp	3	01552	\$58.69



100/60



110/155



92/80



140/120



141/200



200/115



300/100



145/20



145/30



145/40



147TSA/30

## Aluminum Combination 145

Solid and lightweight aluminum body with resettable combination. Ideal for locking of cabinets, lockers or luggage.

Description	Inner Pk	Item #	List Price
145/20 C Black (aluminum, 3-dial resettable)	6	14520	\$8.67
145/20 C Yellow (aluminum, 3-dial resettable)	6	14521	\$8.67
145/20 C Orange (aluminum, 3-dial resettable)	6	14522	\$8.67
145/20 C Blue (aluminum, 3-dial resettable)	6	14523	\$8.67
145/20 C Red (aluminum, 3-dial resettable)	6	14524	\$8.67
145/20 C Green (aluminum, 3-dial resettable)	6	14525	\$8.67
145/30 C Black (aluminum, 3-dial resettable)	6	14530	\$8.97
145/30 C Yellow (aluminum, 3-dial resettable)	6	14531	\$8.97
145/30 C Orange (aluminum, 3-dial resettable)	6	14532	\$8.97
145/30 C Blue (aluminum, 3-dial resettable)	6	14533	\$8.97
145/30 C Red (aluminum, 3-dial resettable)	6	14534	\$8.97
145/30 C Green (aluminum, 3-dial resettable)	6	14535	\$8.97
145/30 C multi-pack (aluminum, 4-dial resettable) (3-Black, 3-Blue, 3-Red, 2-Green, 1-Yellow)	6	97114	\$107.56
145/40 C Black (aluminum, 4-dial resettable)	6	14540	\$14.03
145/40 C Yellow (aluminum, 4-dial resettable)	6	14541	\$14.03
145/40 C Orange (aluminum, 4-dial resettable)	6	14542	\$14.03
145/40 C Blue (aluminum, 4-dial resettable)	6	14543	\$14.03
145/40 C Red (aluminum, 4-dial resettable)	6	14544	\$14.03
145/40 C Green (aluminum, 4-dial resettable)	6	14545	\$14.03
145/40 C multi-pack (aluminum, 4-dial resettable) (3-Black, 3-Blue, 3-Red, 2-Green, 1-Yellow)	6	97115	\$166.06

## TSA 147/148

3-digit resettable combination lock is TSA-approved and ideal for travel.

Description	Inner Pk	Item #	List Price
147TSA/30 C	12	14587	\$11.96
148TSA/30 C	6	14588	\$14.41

## BakPac™ 151

3-digit resettable combination lock. Shackle opens by pushing side lever.

Description	Inner Pk	Item #	List Price
151/20 C BakPac™ Blue	12	14561	\$8.31
151/20 C BakPac™ Red	12	14560	\$8.31
151/20 C BakPac™ Yellow	12	14562	\$8.31
151/20 C BakPac™ Pink	12	14563	\$8.31
151/20 C BakPac™ Black	12	14564	\$8.31
151/20 C BakPac™ Tan	12	14565	\$8.31
151/20 C BakPac™ multi-pack (6-Black, 6-Tan)	12	14570	\$97.42
151/20 C BakPac™ multi-pack (4-Red, 4-Blue, 2-Yellow, 2-Pink)	12	14571	\$97.42



151/20



151/20



151/20



## Combination 155

Convenient, 4-dial resettable combination.

Description	Inner Pk	Item #	List Price
155/40 C Side (4-dial resettable)	6	12825	\$11.50



155/40

Security

## Combination 158

Solid zinc die cast body with 4-dial resettable combination and hardened steel shackle.

Description	Inner Pk	Item #	List Price
158/40 C (zinc die cast front 3-dial resettable combo)	3	12826	\$21.70
158/50 C (zinc die cast front 4-dial resettable combo)	3	12827	\$28.07
158/45KC (zinc die cast side 4-dial resettable key control combo)	12	12708	\$35.68
158/45KC (key only)	1	12709	\$7.66



158/50

Safety Lockout

## Steel Combination 160

Chrome-plated steel body with resettable combination. Double-bolted hardened steel shackle resists hacksaw attacks.

Description	Inner Pk	Item #	List Price
160/40 C (steel/chrome 3-dial resettable)	6	12611	\$29.31
160/50 C (steel/chrome 4-dial resettable)	6	12811	\$33.14
160/50HB50 C (steel/chrome 4-dial resettable, 2" shackle)	6	12812	\$44.58



160/50HB50

## Brass Combination 180

Solid brass body with resettable 4-Dial combination and stainless steel shackle. Precision locking mechanism and inner components made from non-corrosive materials.

Description	Inner Pk	Item #	List Price
180IB/50 C (solid brass 4-dial resettable)	6	15812	\$29.31
180IB/50HB63 C (solid brass 4-dial resettable, 2-5/16" shackle)	6	15813	\$32.90



180IB/50

Key Blanks

## Heavy Duty Combination 190

Heavy duty combination lock with solid hardened steel jacket, 4-digit resettable code and precision locking mechanism. Shackle guard provides extra protection from aggressive attacks.

Description	Inner Pk	Item #	List Price
190CS/60 C (resettable combo)	2	15821	\$107.03



190CS/60

## Combination Cable 2501/2502

Compact, retractable cable lock provides superior protection for items such as luggage and sporting equipment. Comes with customizable combination code and convenient travel pouch.

Description	Inner Pk	Item #	List Price
2501/65 CombiFlex (3-dial)	3	12715	\$29.63
2502/85 CombiFlex (3-dial)	3	12716	\$35.54



2501/65

General Information



## Cable Lock 210/215

PVC-coated braided steel cable with integrated lock. Included adapter converts from single loop to double loop.

Description	Inner Pk	Item #	List Price
210/185 C Black (Keyed Multi-loop)	1	52524	\$83.44
215/185 C Blback (Combo Multi-loop)	1	58477	\$79.43

215/185



787 KeyGarage™

## KeyGarage™

Solid metal housing offers more capacity for keys and access cards.

Description	Inner Pk	Item #	List Price
737 C mini key storage	8	10736	\$32.91
767 C key storage (push button wall mount)	7	10767	\$43.88
777 C key storage (push button w/shackle)	7	10777	\$47.18
787 C key storage (4-dial wall mount)	8	10787	\$40.10
797 C key storage (4-dial w/shackle)	8	10797	\$42.79

## Security Chain

Hardened steel chain with fabric sleeve to prevent contact damage. Square-shaped links provide top security.

Description	Inner Pk	Item #	List Price
6KS (2' chain & sleeve)	1	00750	\$18.03
8KS (2' chain & sleeve)	1	00751	\$28.26
10KS (2' chain & sleeve)	1	00752	\$40.06
12KS (2' chain & sleeve)	1	00753	\$60.62
14KS (2' chain & sleeve)	1	00754	\$87.25
6KS (6' chain & sleeve)	1	00712	\$60.17
8KS (6' chain & sleeve)	1	00713	\$90.11
10KS (6' chain & sleeve)	1	00714	\$124.67
12KS (6' chain & sleeve)	1	00715	\$186.24
14KS (6' chain & sleeve)	1	00718	\$266.18
6KS (10' chain & sleeve)	1	00760	\$95.62
8KS (10' chain & sleeve)	1	00761	\$149.27
10KS (10' chain & sleeve)	1	00762	\$212.08
12KS (10' chain & sleeve)	1	00763	\$307.75
14KS (10' chain & sleeve)	1	00764	\$461.68
6KS Chain (by foot, 1' to 100')	1	00700	\$7.19
8KS Chain (by foot, 1' to 100')	1	00701	\$11.80
10KS Chain (by foot, 1' to 100')	1	00702	\$17.36
12KS Chain (by foot, 1' to 63')	1	00703	\$27.14
14KS Chain (by foot 1' to 43')	1	00704	\$39.10
6KS ABUS Sleeve only (by foot, 1' to 100')	1	00705	\$1.75
8KS ABUS Sleeve only (by foot, 1' to 100')	1	00706	\$2.24
10KS ABUS Sleeve only (by foot, 1' to 100')	1	00707	\$2.47
12KS ABUS Sleeve only (by foot, 1' to 63')	1	00708	\$2.69
14KS ABUS Sleeve only (by foot 1' to 43')	1	00709	\$4.05
12KS Chain Loop (2.5' chain, sleeve and loop)	1	03240	\$153.54
12KS Chain Loop (4' chain, sleeve and loop)	1	03241	\$166.12
12KS Chain Loop (5' chain, sleeve and loop)	1	03242	\$188.43



10KS Chain & Sleeve

## Floor/Wall Anchor

High-quality plastic anchor with hardened steel shackle. Flat shape allows for driving over anchor while floor mounted.

Description	Inner Pk	Item #	List Price
WBA-100 C Floor Anchor	1	03303	\$55.68
WA-50 Wall Anchor	1	03300	\$133.90



WBA-100

## File Bar

File cabinet locking bar - meets double-locking requirements for legal applications.

Description	Inner Pk	Item #	List Price
ABUS File Bar-1 (chrome)	10	07010	\$49.81
ABUS File Bar-2 (chrome)	10	07020	\$54.86
ABUS File Bar-3 (chrome)	10	07030	\$58.15
ABUS File Bar-4 (chrome)	10	07040	\$62.37
ABUS File Bar-5 (chrome)	10	07050	\$69.18



File Bar

**PLEASE NOTE:** ABUS products come packaged in a box as a standard unless noted with a C in the description which indicates the product is blister packaged.

## Padlock Keying Charges

- Keyed Different (KD) Standard (no additional charge)
- Keyed Alike (KA) = KD + \$1.05 additional per lock
- Master Keyed (MK) = KD + \$5.00 additional per lock
- Key Stamping \$1.00 additional per key\*
- Key Retaining \$.40 additional per key\*
- Extra Cut Key \$1.75 additional per key\*
- Extra Plus Cut Key \$5.00 additional per key\*
- Extra Plus LED Cut Key \$6.00 additional per key\*
- Extra Master Cut Key \$3.00 additional per key\*
- Extra Dimple Cut Key \$2.50 additional per key\*
- Charting KD Locks \$.40 additional per lock\*
- Custom laser engraving \$1 per lock up to 3 lines\*

\*net

## Safety Laminated Steel

ETERNA™ coating on each laminate provides extreme corrosion resistance, with hardened steel shackle, 5-pin cylinder and countersunk rivets.

**Keyed Alike (KA): +\$1.05 List Price, Master Keyed (MK): +\$5.00 List Price**

Description	Key Options	Inner Pk	Item #	List Price
41/30 KD	KD, KA, MK	12	41415	\$12.51
41/40 C KD Blue Bumper	KD	6	41611	\$13.99
41/40 KD Blue Bumper	KD, KA, MK	12	41615	\$13.99
41/40 KD Black Bumper	KD, KA, MK	12	09672	\$13.99
41/40 KD Green Bumper	KD, KA, MK	12	42012	\$13.99
41/40 KD Red Bumper	KD, KA, MK	12	42013	\$13.99
41/40 KD White Bumper	KD, KA, MK	12	42014	\$13.99
41/40 KD Yellow Bumper	KD, KA, MK	12	42015	\$13.99
41/40HB50 KD Blue Bumper	KD, KA, MK	6	41635	\$16.29
41/40HB50 KD Black Bumper	KD, KA, MK	6	09686	\$16.29
41/40HB50 KD Green Bumper	KD, KA, MK	6	41381	\$16.29
41/40HB50 KD Red Bumper	KD, KA, MK	6	41382	\$16.29
41/40HB50 KD White Bumper	KD, KA, MK	6	41383	\$15.74
41/40HB50 KD Yellow Bumper	KD, KA, MK	6	41384	\$15.74
41/45 C KD	KD	6	41711	\$15.79
41/45 KD	KD, KA, MK	6	41715	\$15.79
41/45HB50 KD (2" shackle)	KD, KA, MK	6	41735	\$17.72



41/40



41/40



41/40



41/40



## Safety Laminated Steel

**Keyed Alike (KA): +\$1.05 List Price, Master Keyed (MK): +5.00 List Price**

Description		Case Pk	Item #	List Price
41/50 C KD	KD	6	41811	\$19.42
41/50 KD	KD, KA, MK	6	41815	\$19.42
41/50HB50 KD (2" shackle)	KD, KA	6	41835	\$21.28

## Safety Aluminum 72

Anodized aluminum body with NANO PROTECT™-coated hardened steel shackle. 5- or 6-pin cylinder for maximum number of key differs. Is available key-retaining and can be rekeyed to match an existing key. Product is ULE validated.

**Keyed Alike (KA): +\$1.05 List Price, Master Keyed (MK): +5.00 List Price**

Description	Key Options	Inner Pk	Item #	List Price
72/30 KD Black (1" shackle)	KD, KA, MK	6	09100	\$15.92
72/30 C KD Blue (1" shackle)	KD	6	09180	\$15.92
72/30 KD Blue (1" shackle)	KD, KA, MK	6	09101	\$15.92
72/30 KD Brown (1" shackle)	KD, KA, MK	6	09102	\$15.92
72/30 KD Green (1" shackle)	KD, KA, MK	6	09103	\$15.92
72/30 KD Orange (1" shackle)	KD, KA, MK	6	09104	\$15.92
72/30 KD Purple (1" shackle)	KD, KA, MK	6	09105	\$15.92
72/30 KD Red (1" shackle)	KD, KA, MK	6	09106	\$15.92
72/30 KD Silver (1" shackle)	KD, KA, MK	6	09107	\$15.92
72/30 KD Yellow (1" shackle)	KD, KA, MK	6	09108	\$15.92
72/40 KD Black (1" shackle)	KD, KA, MK	6	08300	\$18.34
72/40 KD Blue (1" shackle)	KD, KA, MK	6	08301	\$18.34
72/40 KD Green (1" shackle)	KD, KA, MK	6	08302	\$18.34
72/40 KD Orange (1" shackle)	KD, KA, MK	6	08303	\$18.34
72/40 C KD Red (1" shackle)	KD	6	08909	\$18.34
72/40 KD Red (1" shackle)	KD, KA, MK	6	08304	\$18.34
72/40 KD Yellow (1" shackle)	KD, KA, MK	6	08305	\$18.34
72/40 KD Purple (1" shackle)	KD, KA, MK	6	08307	\$18.34
72/40 KD Brown (1" shackle)	KD, KA, MK	6	08306	\$18.34
72/40 KD Silver (1" shackle)	KD, KA, MK	6	08308	\$18.34
72/40HB40 KD Black (1-9/16" shackle)	KD, KA, MK	6	08400	\$19.88
72/40HB40 KD Blue (1-9/16" shackle)	KD, KA, MK	6	08401	\$19.88
72/40HB40 KD Green (1-9/16" shackle)	KD, KA, MK	6	08402	\$19.88
72/40HB40 KD Orange (1-9/16" shackle)	KD, KA, MK	6	08403	\$19.88
72/40HB40 KD Red (1-9/16" shackle)	KD, KA, MK	6	08404	\$19.88
72/40HB40 KD Yellow (1-9/16" shackle)	KD, KA, MK	6	08405	\$19.88
72/40HB40 KD Purple (1-9/16" shackle)	KD, KA, MK	6	08407	\$19.88
72/40HB40 KD Brown (1-9/16" shackle)	KD, KA, MK	6	08406	\$19.88
72/40HB40 KD Silver (1-9/16" shackle)	KD, KA, MK	6	08408	\$19.88
72/40HB75 KD Black (3" shackle)	KD, KA, MK	6	08500	\$21.40
72/40HB75 KD Blue (3" shackle)	KD, KA, MK	6	08501	\$21.40
72/40HB75 KD Green (3" shackle)	KD, KA, MK	6	08502	\$21.40
72/40HB75 KD Orange (3" shackle)	KD, KA, MK	6	08503	\$21.40
72/40HB75 KD Red (3" shackle)	KD, KA, MK	6	08504	\$21.40
72/40HB75 KD Yellow (3" shackle)	KD, KA, MK	6	08505	\$21.40
72/40HB75 KD Purple (3" shackle)	KD, KA, MK	6	08507	\$21.40
72/40HB75 KD Brown (3" shackle)	KD, KA, MK	6	08506	\$21.40



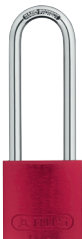
72/30



72/40



72/40HB40



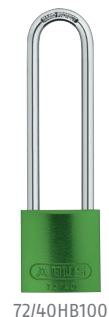
72/40HB75



## Safety Aluminum 72

**Keyed Alike (KA): +\$1.05 List Price, Master Keyed (MK): +5.00 List Price**

Description		Case Pk	Item #	List Price
72/40HB100 KD Black (4" shackle)	KD, KA, MK	6	08900	\$21.39
72/40HB100 KD Blue (4" shackle)	KD, KA, MK	6	08901	\$21.39
72/40HB100 KD Green (4" shackle)	KD, KA, MK	6	08902	\$23.00
72/40HB100 KD Orange (4" shackle)	KD, KA, MK	6	08903	\$21.39
72/40HB100 KD Purple (4" shackle)	KD, KA, MK	6	08907	\$21.39
72/40HB100 KD Red (4" shackle)	KD, KA, MK	6	08904	\$23.00
72/40HB100 KD Silver (4" shackle)	KD, KA, MK	6	08908	\$20.67
72/40HB100 KD Yellow (4" shackle)	KD, KA, MK	6	08905	\$21.39



## Cable Safety Aluminum 72

Anodized aluminum body padlock with flexible cable, ideal for restricted area applications.

**Keyed Alike (KA): +\$1.05 List Price, Master Keyed (MK): +5.00 List Price**

Description	Key Options	Inner Pk	Item #	List Price
72/30CAB KD Black (4" cable)	KD, KA, MK	6	13003	\$25.65
72/30CAB KD Blue (4" cable)	KD, KA, MK	6	13009	\$25.65
72/30CAB KD Brown (4" cable)	KD, KA, MK	6	13021	\$25.65
72/30CAB KD Green (4" cable)	KD, KA, MK	6	13012	\$25.65
72/30CAB KD Orange (4" cable)	KD, KA, MK	6	13018	\$25.65
72/30CAB KD Purple (4" cable)	KD, KA, MK	6	13015	\$25.65
72/30CAB KD Red (4" cable)	KD, KA, MK	6	13000	\$25.65
72/30CAB KD Silver (4" cable)	KD, KA, MK	6	13024	\$25.65
72/30CAB KD Yellow (4" cable)	KD, KA, MK	6	13006	\$25.65
72/30CAB KD Black (8" cable)	KD, KA, MK	6	13030	\$28.13
72/30CAB KD Blue (8" cable)	KD, KA, MK	6	13036	\$28.13
72/30CAB KD Brown (8" cable)	KD, KA, MK	6	13048	\$28.13
72/30CAB KD Green (8" cable)	KD, KA, MK	6	13039	\$28.13
72/30CAB KD Orange (8" cable)	KD, KA, MK	6	13045	\$28.13
72/30CAB KD Purple (8" cable)	KD, KA, MK	6	13042	\$28.13
72/30CAB KD Red (8" cable)	KD, KA, MK	6	13027	\$28.13
72/30CAB KD Silver (8" cable)	KD, KA, MK	6	13051	\$28.13
72/30CAB KD Yellow (8" cable)	KD, KA, MK	6	13033	\$28.13



## Safety Insulated 74

Plastic-covered lightweight aluminum body with vinyl-coated NANO PROTECT™ steel shackle. Intrinsically safe, key-retaining and automatic locking for user convenience. 6-pin cylinder for better tamper resistance. Product is ULE validated.

**Keyed Alike (KA): +\$1.05 List Price, Master Keyed (MK): +5.00 List Price**

Description	Key Options	Inner Pk	Item #	List Price
74/40 KD Red (1-1/2" shackle)	KD, KA, MK	6	09805	\$16.75
74/40 C KAx3 Red (1-1/2" shackle)	KD, KA, MK	6	09818	\$53.95
74/40 C KD Yellow (1-1/2" shackle)	KD, KA, MK	6	09816	\$16.75
74/40 KD Yellow (1-1/2" shackle)	KD, KA, MK	6	09806	\$16.75
74/40 KD Green (1-1/2" shackle)	KD, KA, MK	6	09802	\$16.75
74/40 KD Purple (1-1/2" shackle)	KD, KA, MK	6	09804	\$16.75
74/40 KD Orange (1-1/2" shackle)	KD, KA, MK	6	09803	\$16.75
74/40 C KD Blue (1-1/2" shackle)	KD, KA, MK	6	09817	\$16.75





74/40HB75



74LB/40

## Safety Insulated 74

**Keyed Alike (KA): +\$1.05 List Price, Master Keyed (MK): +5.00 List Price**

Description		Case Pk	Item #	List Price
74/40 KD Blue (1-1/2" shackle)	KD, KA, MK	6	09801	\$16.75
74/40 KD Black (1-1/2" shackle)	KD, KA, MK	6	09800	\$16.75
74/40 KD Brown (1-1/2" shackle)	KD, KA, MK	6	09807	\$16.75
74/40HB75 KD Red (3" shackle)	KD, KA, MK	6	09845	\$18.10
74/40HB75 KD Yellow (3" shackle)	KD, KA, MK	6	09846	\$18.10
74/40HB75 KD Green (3" shackle)	KD, KA, MK	6	09842	\$18.10
74/40HB75 KD Purple (3" shackle)	KD, KA, MK	6	09844	\$18.10
74/40HB75 KD Orange (3" shackle)	KD, KA, MK	6	09843	\$18.10
74/40HB75 KD Blue (3" shackle)	KD, KA, MK	6	09841	\$18.10
74/40HB75 KD Black (3" shackle)	KD, KA, MK	6	09840	\$18.10
74/40HB75 KD Brown (3" shackle)	KD, KA, MK	6	09847	\$18.10
74LB/40 KD Red (3" body & 1-1/2" shackle)	KD, KA, MK	6	09885	\$18.57
74LB/40 KD Yellow (3" body & 1-1/2" shackle)	KD, KA, MK	6	09886	\$18.57
74LB/40 KD Green (3" body & 1-1/2" shackle)	KD, KA, MK	6	09882	\$18.57
74LB/40 KD Orange (3" body & 1-1/2" shackle)	KD, KA, MK	6	09883	\$18.57
74LB/40 KD Blue (3" body & 1-1/2" shackle)	KD, KA, MK	6	09881	\$18.57
74LB/40 KD Black (3" body & 1-1/2" shackle)	KD, KA, MK	6	09880	\$18.57
74LB/40 KD Brown (3" body & 1-1/2" shackle)	KD, KA, MK	6	09887	\$17.92

## Brass Body Safety Insulated 74

**Solid brass body encased by a colored plastic cover. Intrinsically safe, key-retaining and automatic locking for user convenience. 6-pin cylinder for better tamper resistance.**

**Keyed Alike (KA): +\$1.05 List Price, Master Keyed (MK): +5.00 List Price**

Description	Key Options	Inner Pk	Item #	List Price
74M/40 KD Red (1-1/2" shackle)	KD, KA, MK	6	20030	\$20.70
74M/40 KD Yellow (1-1/2" shackle)	KD, KA, MK	6	20034	\$20.70
74M/40 KD Green (1-1/2" shackle)	KD, KA, MK	6	20032	\$20.70
74M/40 KD Purple (1-1/2" shackle)	KD, KA, MK	6	20035	\$20.70
74M/40 KD Orange (1-1/2" shackle)	KD, KA, MK	6	20033	\$20.70
74M/40 KD Blue (1-1/2" shackle)	KD, KA, MK	6	20031	\$20.70
74M/40 KD Black (1-1/2" shackle)	KD, KA, MK	6	20036	\$20.70
74M/40 KD Brown (1-1/2" shackle)	KD, KA, MK	6	20037	\$20.70
74M/40 KD White (1-1/2" shackle)	KD, KA, MK	6	20038	\$20.70
74M/40HB75 KD Red (3" shackle)	KD, KA, MK	6	20086	\$21.93
74M/40HB75 KD Yellow (3" shackle)	KD, KA, MK	6	20087	\$21.19
74M/40HB75 KD Green (3" shackle)	KD, KA, MK	6	20088	\$21.19
74M/40HB75 KD Purple (3" shackle)	KD, KA, MK	6	20093	\$21.93
74M/40HB75 KD Orange (3" shackle)	KD, KA, MK	6	20094	\$21.93
74M/40HB75 KD Blue (3" shackle)	KD, KA, MK	6	20089	\$21.19
74M/40HB75 KD Black (3" shackle)	KD, KA, MK	6	20091	\$21.93
74M/40HB75 KD Brown (3" shackle)	KD, KA, MK	6	20090	\$21.93
74M/40HB75 KD White (3" shackle)	KD, KA, MK	6	20092	\$21.93
74MLB/40 KD Red (3" body & 1-1/2" shackle)	KD, KA, MK	6	20060	\$22.59
74MLB/40 KD Yellow (3" body & 1-1/2" shackle)	KD, KA, MK	6	20062	\$22.59
74MLB/40 KD White (3" body & 1-1/2" shackle)	KD, KA, MK	6	20063	\$22.59
74MLB/40 KD Green (3" body & 1-1/2" shackle)	KD, KA, MK	6	20066	\$22.59
74MLB/40 KD Purple (3" body & 1-1/2" shackle)	KD, KA, MK	6	20065	\$22.59



74M/40



74M/40HB75



74MLB/40

## Brass Body Safety Insulated 74

Keyed Alike (KA): +\$1.05 List Price, Master Keyed (MK): +5.00 List Price				
Description		Case Pk	Item #	List Price
74MLB/40 KD Blue (3" body & 1-1/2" shackle)	KD, KA, MK	6	20061	\$22.59
74MLB/40 KD Black (3" body & 1-1/2" shackle)	KD, KA, MK	6	20059	\$22.59
74MLB/40 KD Brown (3" body & 1-1/2" shackle)	KD, KA, MK	6	20068	\$22.59

## Safety Plastic Covered Body 76

Plastic-covered lightweight aluminum body with variety of shackle options. 8-pin cylinder offers more than 150,000 true key differs. Protected keyway eliminates cross-keying.

Keyed Alike (KA): +\$1.05 List Price, Master Keyed (MK): +5.00 List Price				
Description	Key Options	Inner Pk	Item #	List Price
76PS/40 KD Red (1-1/2" plastic shackle)	KD, KA, MK	6	84807	\$18.86
76PS/40 KD Blue (1-1/2" plastic shackle)	KD, KA, MK	6	84810	\$18.22
76/40 KD Red (1-1/2" steel shackle with plastic sleeve)	KD, KA, MK	6	84768	\$18.86
76/40 KD Yellow (1-1/2" steel shackle with plastic sleeve)	KD, KA, MK	6	84769	\$18.86
76/40 KD Green (1-1/2" steel shackle with plastic sleeve)	KD, KA, MK	6	84770	\$18.86
76/40 KD Blue (1-1/2" steel shackle with plastic sleeve)	KD, KA, MK	6	84771	\$18.86
76/40HB75 KD Red (3" steel shackle with plastic sleeve)	KD, KA, MK	6	84820	\$21.22
76/40CAB 4" KD Red (4" cable)	KD, KA, MK	6	84864	\$20.03
76/40CAB 4" KD Yellow (4" cable)	KD, KA, MK	6	84865	\$20.03
76/40CAB 8" KD Red (8" cable)	KD, KA, MK	6	84877	\$22.40
76/40CAB 8" KD Yellow (8" cable)	KD, KA, MK	6	84878	\$21.64
76/40CAB 8" KD Green (8" cable)	KD, KA, MK	6	84879	\$22.40



76/40



76CAB/40

## Weatherproof Brass T84MB

Corrosion-resistant solid brass lock body with brass shackle and precision pin tumbler.

Keyed Alike (KA): +\$1.05 List Price, Master Keyed (MK): +5.00 List Price				
Description	Key Options	Inner Pk	Item #	List Price
T84MB/30 C KD Black	KD, KA	6	85411	\$11.91
T84MB/30 C KAx3 Black	KA	4	85413	\$39.45
T84MB/40 C KD Blue	KD	6	85611	\$14.91
T84MB/40 KD Blue	KD, KA	6	85951	\$14.91
T84MB/40 KD Black	KD, KA	6	85611A	\$14.91
T84MB/40 KD Green	KD, KA	6	85952	\$14.91
T84MB/40 KD Grey	KD, KA	6	85954	\$14.91
T84MB/40 KD Red	KD, KA	6	85950	\$14.91
T84MB/40 KD Yellow	KD, KA	6	85953	\$14.91
T84MB/50 C KD Black	KD, KA	6	85811	\$22.41



T84MB/40



T84MB/40

## Safety Devices

Plastic and metal devices for a variety of industrial safety applications.

Description	Inner Pk	Item #	List Price
V303 Gate Valve Lockout 1-2.5" Red	1	00362	\$16.02
V305 Gate Valve Lockout 2.5-5.5" Red	1	00364	\$23.97
V307 Gate Valve Lockout 5-6.5" Red	1	00365	\$33.14
V310 Gate Valve Lockout 6.5-10" Red	1	00366	\$42.24



V303 Gate Valve LO



V442 Ball Valve LO



C503 Safelex™ LO



Safety Redbox™

## Safety Devices

Description	Case Pk	Item #	List Price
V313 Gate Valve Lockout 10-13" Red	1	00367	\$73.07
V442 Ball Valve Lockout 0.5-2.5" Red	1	00452	\$30.82
V448 Ball Valve Lockout 2-8" Red	1	00453	\$62.75
P606 Gas Cylinder Lockout	1	00449	\$18.26
P603 Pneumatic Quick-Disconnect Lockout	1	00454	\$21.72
E201 120/277V Clamp-On Breaker Lockout w/ Cleat	1	00368	\$10.75
E202 Universal Multi-Pole Breaker Lockout	1	00401	\$10.75
E250 Wall Switch Lockout	1	00406	\$8.88
P110 110V Electrical & Switch Lockout Device	1	00450	\$13.17
P550 220-550V Electrical & Switch Lockout Device	1	00451	\$17.12
C503 Safelex Universal Cable Lockout w/ 3 ft. Cable	12	00347	\$32.53
C506 Safelex Universal Cable Lockout w/ 6ft. Cable	12	00348	\$37.52
C509 Safelex Universal Cable Lockout w/ 9 ft. Cable	12	00349	\$43.78
C515 Safelex Universal Cable Lockout w/ 15 ft. Cable	12	00353	\$49.97
C553 Standard Cable Lockout w/ 3ft. Cable	12	00355	\$22.00
C556 Standard Cable Lockout w/ 6 ft. Cable	12	00356	\$28.13
C559 Standard Cable Lockout w/ 9 ft. Cable	12	00359	\$34.21
C565 Standard Cable Lockout w/ 15 ft. Cable	12	00361	\$46.41
B835RED Standard Redbox™ w/ 12 padlock eyelets, Red	1	00298	\$84.97
B810 Permit Redbox™, Red	1	88882	\$170.06
V423 Ball Valve Lockout, small (metal)	1	00299	\$24.41
V426 Ball Valve Lockout, big (metal)	1	00300	\$41.51
V500 Universal Valve Lockout	1	87151	\$23.04
Oversize Push Button Lockout Device	1	00455	\$26.61
Electrical Panel Handle Lockout Device	1	00456	\$27.97
Universal Plug/Forklift/Cylinder Lockout Device	1	00457	\$30.06
P625 Plug & Hoist Lockout Bag	1	86525	\$26.33
ULC 100 Water Fountain Lockout Device	1	18099	\$27.56

## Safety Tags

Durable identification tags for industrial safety applications.

Description	Inner Pk	Item #	List Price
T100 Laminated Vinyl DO NOT OPERATE Safety Tag PK10	1	73004	\$25.12
T102 Laminated Vinyl OUT OF SERVICE Safety Tag PK10	1	73011	\$25.02
T200 High-Quality Plastic DO NOT OPERATE Safety Tag PK10	1	73008	\$39.93
Tags on a Roll: Do Not Operate - Red	100	18184	\$49.82
Tags on a Roll: Do Not Operate - Red	250	18185	\$114.48
Tags on a Roll: Locked Out - Red	100	18188	\$49.82
Tags on a Roll: Locked Out - Red	250	18189	\$114.48
Tags on a Roll: Do Not Operate - White	100	18186	\$49.82
Tags on a Roll: Do Not Operate - White	250	18187	\$114.48
Tags on a Roll: Do Not Operate - White Eng/Spa	100	18190	\$49.82
Tags on a Roll: Do Not Operate - White Eng/Spa	250	18191	\$114.48
Tags on a Roll: Do Not Operate - White Eng/Fre	100	18192	\$49.82
Tags on a Roll: Do Not Operate - White Eng/Fre	250	18193	\$114.48



T200 Tag



Tags on a Roll



## Safety Kits and Toolboxes

Convenient and portable kits/toolboxes store and organize lockout devices in one location.

Description	Inner Pk	Item #	List Price
K800 Construction Lockout/Tagout Kit	1	18051	\$140.21
K905 Standard Pouch Kit	1	97174	\$128.20
K900 Basic Pouch Kit	1	97173	\$85.45
K915 Deluxe Pouch Kit	1	97179	\$268.54
K925 Electrical Toolbox Kit	1	97181	\$238.05
K930 Valve Toolbox Kit	1	97182	\$318.90
K945 Operator Lockout Toolbox	1	97185	\$73.24
B200 Lockout/Tagout Toolbox (empty)	1	7129E	\$27.43



K900 Basic Kit



K925 Electrical Toolbox

## Facilities Safety Cabinets and Boards

Compact stations that organize and store lockout devices. Easily accessible so workers have access to devices in maintenance and repair situations.

Description	Inner Pk	Item #	List Price
9" x 9" Lockout Cabinet	1	17053	\$548.55
15" x 15" Lockout Cabinet	1	17054	\$713.12
15" x 30" Lockout Cabinet	1	17055	\$1,097.10
K980 Small Lockout Board (includes 3 locks, 2 hasps, 10 tags)	1	71130	\$201.44
K982 Medium Lockout Board (includes 8 locks, 6 hasps, 10 tags)	1	71140	\$378.41
K984 Large Lockout Board (includes 12 locks, 2 hasps, 10 tags)	1	71150	\$427.23
K986 X-Large Lockout Board (includes 28 locks, 4 hasps, 10 tags)	1	71160	\$793.43
Padlock Station, Small, holds 5 locks, not included	1	18030	\$18.66
Padlock Station, Medium, holds 10 locks, not included	1	18031	\$32.91
Padlock Station, Large, holds 15 locks, not included	1	18032	\$32.91
Padlock Station, XL, holds 20 locks, not included	1	18033	\$38.40



K980 Small Board

## Safety Hasps

Plastic and metal hasps for a variety of industrial safety applications.

Description	Inner Pk	Item #	List Price
ST0701 1" Diameter Lockout Hasp w/o tabs	12	93103	\$6.67
ST0702 1-1/2" Diameter Lockout Hasp w/o tabs	12	93201B	\$7.46
ST0801 1" Diameter Lockout Hasp w/tabs	12	93101	\$7.74
ST0802 1-1/2" Diameter Lockout Hasp w/tabs	12	93201	\$9.00
AL0701 751 1" Aluminum Hasp	12	00302	\$7.37
AL0702 752 1.5" Aluminum Hasp	12	00340	\$8.78
H770 Non-Conductive Plastic Hasp	1	00346	\$7.57
Butterfly Hasp	1	18025	\$9.33
Butterfly Hasp, HB	1	18023	\$10.97
Aluminum Labeled Hasp (English)	1	18024	\$19.75
Aluminum Labeled Hasp (Spanish)	1	18034	\$19.75



ST0701



ST0802



AL0701



H770

## Identi-Shield Labels

Vinyl labels to add custom color and identification to standard padlocks.



Identi-shield Label

Description	Inner Pk	Item #	List Price
AL0703 Red Lockout Labels	10	93010	\$0.88
AL0704 Orange Lockout Labels	10	93020	\$0.88
AL0705 Yellow Lockout Labels	10	93030	\$0.88
AL0706 Green Lockout Labels	10	93040	\$0.88
AL0707 Blue Lockout Labels	10	93050	\$0.88
AL0708 Purple Lockout Labels	10	93060	\$0.88
AL0709 Brown Lockout Labels	10	93070	\$0.88
AL0710 Black Lockout Labels	10	93080	\$0.88

## Lockout Labels

Vinyl labels in multiple languages for lockout padlocks.



Lockout Label

Description	Inner Pk	Item #	List Price
Lockout Labels 1"x 1-3/16" (English/Spanish/French)	10	990342	\$1.59
Lockout Labels 1"x 2-3/8" (English/Spanish & English/French)	10	990342C	\$1.36

## Key Blanks

Replacement or additional keys for your ABUS cylinder or lock.

Description	Inner Pk	Item #	List Price
24/41 KBR (4-pin)	50	90010	\$1.24
24/41 KBL (4-pin)	50	90020	\$1.24
24/RK/26 KBR (5-pin)	50	90015	\$1.24
34/55 KBR	50	90018	\$28.01
34/180HB 900-910	50	90495	\$1.64
36/55 KBR	50	90030	\$1.24
37/55-80 KBR Plus Cylinder	50	90040	\$10.09
45/30 KBR	50	90110	\$1.24
45/40-65 KBR (4-pin)	50	90120	\$1.24
45/40 & 50 KB 5-pin (NEW) PS5	50	90122	\$1.24
54TI/30 and 54TI/35	50	90140	\$1.24
54TI/40 and 54TI/40HB63	50	90150	\$1.24
55/25 KBR	50	90130	\$1.24
55/30 KBR	50	90140	\$1.24
55/40 KBR	50	90150	\$1.24
55/45 KBR	50	90160	\$1.24
55/50 KBR	50	90170	\$1.24
55/60 KBR	50	90180	\$1.24
64TI/25	50	90184	\$1.24
64TI/30	50	90233	\$1.24
64TI/40 and 64TI/40HB40	50	90243	\$1.24
64TI/50	50	90183	\$1.24
65/15 KBR	50	90200	\$1.24
65/20 NEW	50	90215	\$1.24
65/25 OLD	50	90220	\$1.24
65/30 OLD	50	90230	\$1.24
65/30 NEW	50	90233	\$1.24

## Safety Devices

Description	Case Pk	Item #	List Price
65/40-45 KBR New Key Profile	50	90243	\$1.24
65/50 OLD	50	90250	\$1.24
72 RH6 KBR (6-pin)	50	90018	\$1.24
75/50+60 Key Blanks 26424	50	90256	\$1.89
80TI/40HB/40 and 80TI/50	50	90186	\$1.24
T84/30 KBR	50	90330	\$1.24
T84/40 KBR	50	90350	\$1.24
T84/40 KBL	50	90340	\$1.24
T84/50 KBR	50	90370	\$1.24
T84/50 KBL	50	90360	\$1.24
85/20-25 KBR	50	90390	\$1.24
85/20-25 KBL	50	90380	\$1.24
85/30 KBR	50	90410	\$1.24
85/30 KBL	50	90400	\$1.24
85/40 KBR	50	90430	\$1.24
85/40 KBL	50	90420	\$1.24
85/50-60 KBR	50	90450	\$1.24
85/50-60 KBL	50	90440	\$1.24
85/70 KBR	50	90590	\$1.36
580/590/650/670 6-1 KBR	50	90490	\$1.76
580/590/650/670 6-2 KBR	50	90491	\$1.76
75/30+40 KEY CUT 7343	1	90255D	\$5.66
75/30+40 KEY CUT 7344	1	90255A	\$5.24
75/30+40 KEY CUT 7346	1	90255C	\$5.66
75/50+60 KEY CUT 7561	1	90256A	\$5.66
75/50+60 KEY CUT 7562	1	90256B	\$5.66

## GLOSSARY



### BODY MATERIAL

AL = Aluminum  
 IB, ST = Stainless Steel  
 M, MB = Brass  
 TI = Titanium

### SHACKLE MATERIAL

MB = Brass  
 PS = Plastic  
 CAB = Cable

### SHACKLE LENGTH

CS = Closed Shackle  
 HB 25 = 1"  
 HB40 = 1 1/2"  
 HB50 = 2"  
 HB63 = 2 1/2"  
 HB75 = 3"  
 HB100 = 4"

### KEYING

KD = Keyed Different  
 KA = Keyed Alike  
 KC = Key Control  
 MK = Master Key  
 GMK = Grand Master Key  
 RK = Rekeyable  
 IC = Interchangeable Core

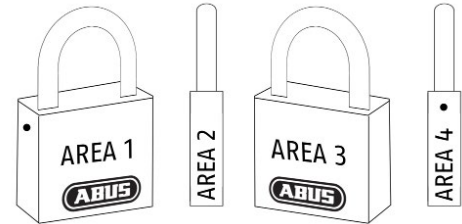
# CUSTOM LOCK ENGRAVING



Security Tech Germany

ABUS offers custom engraving on a variety of padlocks. Engraving can be done on all four sides of the padlocks (areas 1 to 4) and a key stamp can also be placed on the corresponding key (area 5).

Engraving can include alphanumeric characters, serial numbers and logos. For logo engraving, please supply a digital line art file, preferably Encapsulated Postscript Vector Files (EPS).



Area 1: Front of Padlock

Area 2: Right-Side of Padlock

Area 3: Back of Padlock

Area 4: Left-Side of Padlock

## Customer Order Form: Shipping Address

Company

Address

City  State  Zip Code

PO #  Date

This is an editable PDF. Please type in your information, save your data and submit to [customerservice@us.abus.com](mailto:customerservice@us.abus.com). Alternatively, you can print this file, fill it in, email OR fax it to 623-516-9934.

Please choose 1 (ONE) size option and complete the appropriate fields using the amount of character sizes indicated per size chosen. The maximum number of rows and characters per row is stated for each area (row x characters).

## Please complete for padlock engraving:

☐ 1/4" Character Size

☐ 1/8" Character Size

The maximum number of rows and characters per row is indicated for each area.

If applicable, please select what area you would like your logo engraved on.

AREA 1: FRONT		LOGO: YES <input type="checkbox"/> NO <input type="checkbox"/>	AREA 3: BACK		LOGO: YES <input type="checkbox"/> NO <input type="checkbox"/>
1/8" CHARACTER SIZE 3 rows x 14 characters			1/8" CHARACTER SIZE 3 rows x 14 characters		
1/4" CHARACTER SIZE 2 rows x 8 characters			1/4" CHARACTER SIZE 2 rows x 8 characters		
ROW 1	<input type="text"/>		ROW 1	<input type="text"/>	
ROW 2	<input type="text"/>		ROW 2	<input type="text"/>	
ROW 3	<input type="text"/>		ROW 3	<input type="text"/>	

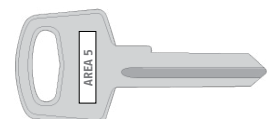
AREA 2: RIGHT-SIDE		LOGO: YES <input type="checkbox"/> NO <input type="checkbox"/>	AREA 4: LEFT-SIDE		LOGO: YES <input type="checkbox"/> NO <input type="checkbox"/>
1/8" CHARACTER SIZE 2 rows x 16 characters			1/8" CHARACTER SIZE 2 rows x 10 characters		
1/4" CHARACTER SIZE 1 row x 7 characters			1/4" CHARACTER SIZE 1 row x 5 characters		
ROW 1	<input type="text"/>		ROW 1	<input type="text"/>	
ROW 2	<input type="text"/>		ROW 2	<input type="text"/>	

Key Stamping Required: YES ☐ NO ☐

## Key Stamping - ARIAL Font, ALL CAPS

You can engrave up to 8 characters on the key in Area 5.

Area 5



# CUSTOM SAFETY KIT ORDER FORM

Company:		Attention:	
Address:			
City:	State:	Postal Code:	
PO #:	Date:		

Please indicate the quantity and color of each item requested

## SELECT POUCH OR TOOLBOX:

B100	Small Pouch	<input type="checkbox"/>	B102	Large Pouch	<input type="checkbox"/>	B200	Toolbox	<input type="checkbox"/>
------	-------------	--------------------------	------	-------------	--------------------------	------	---------	--------------------------



## SELECT DEVICE(S):

### Lockout/Tagout Hasp

ST0701 - 1" Hasp:	
ST0702 - 1½" Hasp:	
ST0801 - 1" Hasp (with Tab):	
ST0802 - 1½" Hasp (with Tab):	

### Lockout Tags

T100 - DO NOT OPERATE:	
T102 - OUT OF SERVICE:	

### Gate Valve Lockout

V303 - Fits Gate Valve 1 - 2½":	
V305 - Fits Gate Valve 2½ - 5":	

### Compressed Air Lockout

P603:	
-------	--

### V500 Universal Valve Lockout

87151:	
--------	--

### Breaker Lockout

E201 Single-Pole Breaker Lockout:	
E202 Multi-Pole Breaker Lockout:	

### Plug/Forklift/Cylinder Lockout

00457:	
--------	--

### Electric Panel Handle Lockout

00456:	
--------	--

### Oversize Push Button Lockout

00455:	
--------	--

## SELECT PADLOCK(S):

	RED	BLUE	GREEN	YELLOW	ORANGE
<b>Aluminum 72/40</b>					
1½" Shackle:					
3" Shackle:					
<b>Cable Aluminum 72/30CAB</b>					
4":					
8":					
<b>Laminated Steel 41/40</b>					
1½" Shackle:					
3" Shackle:					
<b>Insulated Aluminum 74/40</b>					
1½" Shackle:					
3" Shackle:					
3" Body & 1½" Shackle:					
<b>Insulated Brass 74M/40</b>					
1½" Shackle:					
3" Shackle:					
3" Body & 1½" Shackle:					
<b>Silver Rock™ 5/50HB25</b>					
	Keyed-Different #62795			Keyed-Alike #550001	
1½" Shackle:					

### Ball Valve Lockout

V442	
Max Handle Thickness 25/64":	
Max Handle Width 29/32":	
V423	
Max Handle Thickness 9/32":	
Max Handle Width 1 25/64":	

### Switch Lockout

E250:	
-------	--

### Power Plug Lockout

P110 - 3½ x 3 3/16":	
P550 - 657/64 x 49/16":	

	3'	6'	9'	15'
<b>Safelex™ Universal Cable Lockout:</b>				
<b>Standard Cable Lockout:</b>				



# General Information and Conditions

## STANDARD TERMS & CONDITIONS

ABUS USA, LLC ("ABUS"), a division of the ABUS Group and all of its subsidiaries and related companies (future or currently existing) reserve the right to refuse an order, in its entirety or in part, when the credit of the Purchaser is judged not to be satisfactory in our absolute discretion. Furthermore, ABUS and its affiliates may refuse an order when the type or quantity of goods being requested does not conform to our ordering specifications.

The following conditions and terms incorporated herein constitute the entire agreement between the parties. Sales quotations, sales quotation requests, purchase orders or other forms of acknowledgment issued by the Purchaser that have contradictory terms and conditions do not bind ABUS or its affiliates to any other terms and conditions beyond those encompassed in this agreement. Only with separate written agreements written by ABUS or its affiliates and authorized by an ABUS representative may alternative terms and conditions be considered or referenced.

When ABUS accepts the Purchaser's purchase order, the Purchaser agrees that they accept the terms and conditions as described in this agreement regardless of the terms and conditions that may be specified in the Purchaser's purchase order. In the event when the Purchaser's purchase order terms and conditions and the terms and conditions specified in this agreement conflict, the Purchaser's terms and conditions will be disregarded and denied and the Purchaser agrees that this agreement shall constitute the entire agreement between the Purchaser and ABUS. In the event or circumstance that the enforcement of the terms and conditions of this agreement hereof is not conducted by ABUS or any other instrument, document, or alternative agreement relating to the goods being sold, such lack of enforcement will not waive, affect or reduce any right of ABUS in the future to require/enforce strict performance of such terms and agreements.

## PRICES

All prices are subject to change without advance notice and are not guaranteed. All orders received by ABUS are deemed submitted at applicable prices in effect at the time of shipment pursuant to the terms and conditions outlined below. Possession of this catalog, ABUS Price List or other officially authorized ABUS documents, sales literature, catalogs does not constitute an agreement to sell. We reserve the right to correct clerical and other types of errors at any time. All prices are stated in US dollars.

## TERMS

Decisions concerning the extension of trade credit are made by ABUS in its absolute sole discretion. Distributors/Purchasers who satisfy ABUS' ordinary credit criteria will be able to purchase products from ABUS at Net thirty (30) days. A service charge of 1% per month shall be imposed on the unpaid balance of any delinquent invoices. COD or Cash in Advance orders do not qualify for any term discounts. Furthermore, the Customer/Distributor/Purchaser shall be responsible for costs involving collections, court cost and or attorney's fees in association with the recovery of any overdue amounts.

## RETURNED CHECKS

NSF checks will be charged a \$30 returned check fee. Returned checks are required to be paid by money order, cashier's check, or credit card. ABUS reserves the right to revoke open terms and change the account to Credit Card Required if we receive more than two returned checks for an account in any 90 day time period.

## CREDIT HOLD POLICY

ABUS reserves the right to hold orders for any account that is past due.

## STATE RESALE TAX CERTIFICATE

ABUS is required by law to have a valid resale tax certificate on file for each customer that makes a tax-exempt purchase. It is very easy to confuse the Resale Tax Certificate with a sales tax license, registration, or resellers permit number. The Resale Tax Certificate applies to the purchase(s) of goods for resale and proves that sales tax does not need to be collected; the purchaser must collect sales tax when the goods are resold. There are state specific laws that must be followed. Unfortunately, there is no one form that can be used in all states. ABUS must have a Resale Tax Certificate for each dealer for each state, and may have multiple Resale Tax Certificates for a customer. Some Resale Tax Certificates expire, so ABUS must monitor the validity and be certain that Resale Tax Certificates on file are current.

## ACCOUNT CHANGES

For your protection, any changes to your business such as name, address, phone/fax number, contact personnel, or ownership must be submitted to ABUS in writing by a principal and then sent via fax or USPS to us.

## CHANGES & CANCELLATIONS

Changes to or cancellations of orders must be made in writing and delivered by email, fax or regular mail. Cancellations made after ABUS has issued an order acknowledgment are subject to ABUS approval, and are subject to a \$25 processing fee in addition to any cost incurred by ABUS as a result of the original order.

## QUOTATIONS

If and when ABUS chooses to provide an official sales quote, the quote will be valid for thirty (30) days. Complete shipment of the order must be accepted by the Purchaser within six (6) months from the date of issuance. Sale quote numbers (SO #'s) and possible project names must be referenced on the order. The sales quote is considered null and void if the Purchase Order does not reflect all of the product lines on the original sales quote or if the quantities for an item found in the quote deviate fifteen (15) percent or more. The Purchaser must request a new quotation.

Amendments, changes or modifications to an original sales quote will be accepted for up to thirty (30) days from the date of the original quote. All modifications must reference the original sales quote number. With the acceptance of the sales quote for the purchase of products, the Purchase agrees that the products or services being purchased will not be resold or transferred to any distributor not sanctioned/authorized by ABUS to sell its products. This includes all branches and affiliates of the distributor. Failure to adhere to this restriction may result in the distributor's loss in eligibility for quotes or services in ABUS sole discretion.

## FREIGHT POLICY

ABUS will prepay freight on deliveries to customers provided the following conditions are met (customers in Alaska, Hawaii, Puerto Rico, and Canada are excluded and should contact ABUS USA, LLC for information regarding applicable freight charges):

1. The order must be for a minimum of \$750 to qualify for prepaid freight.
2. Payment of invoices is within terms. (i.e. freight will not be prepaid on orders to customers with past due invoices).
3. ABUS reserves and shall have the absolute right to select and employ the most economical carrier. If the customer specifies routing that results in higher freight costs, then ABUS' invoice will include the difference, which the customer agrees to pay.
4. All shipments are FOB (Freight On Board) ABUS US, Phoenix, AZ. Title of goods passes to customer upon delivery thereof by ABUS to the carrier or delivery service. Thereupon, the purchaser assumes fully the risk of loss.

**CLAIMS**

All claims for shipping and/or invoicing differences must be submitted within 10 days of receipt of shipment. Upon delivery to or pickup by the carrier, title passes and shipments become the property of the customer.

The customer assumes the risk of and makes claims for any loss, shortage or damage in transit.

**RETURNS**

Requests to return ABUS products should be made within 10 days from date of order and ABUS reserves the right to request date of manufacture and other product information. On goods returned for customer convenience, ABUS requires product be in new, resellable condition and in the original, unaltered packaging.

An RMA (Return Material Authorization) must be obtained from authorized personnel of ABUS before any product may be returned. RMA number must be clearly marked on the outside of the return package. Upon inspection by ABUS, a decision will be made to issue a credit for the ABUS product. This decision will be made solely by ABUS in accordance with the provisions of these Terms. Merchandise returned to ABUS in original unopened cartons is subject to a 15% restocking fee. Merchandise returned in an unsellable state (damaged blisters, product cards etc.) will be subject to an additional 20% repackaging fee.

Obsolete products will not be accepted for return. Transportation charges and insurance on all returned materials must be prepaid by the purchaser.

On goods returned for customer convenience, when the purchaser returns materials in compliance with these Terms which are accepted by ABUS, the purchaser may be issued a credit for 85% of the purchase price, with 15% charged by ABUS for handling and reprocessing.

Refused Orders – Orders refused for any reason will be charged a 15% restocking fee and all applicable freight costs incurred by ABUS will be charged to your account.

All refunds will be in the form of a merchandise credit, no cash refunds will be given.

Custom Pinning/Keying orders will be assessed a 25% re-stocking fee. All engraved locks are non-refundable.

**ABUS CARE WARRANTY**

This warranty gives you specific rights, and you may have other rights which vary from state to state. This warranty applies to ABUS brand products only.

If an ABUS product fails to work properly due to a manufacturing defect, return it to ABUS postage prepaid, and we will return it repaired or replaced at our discretion. To obtain warranty service, please call 800.352.2287 or simply return the padlock prepaid along with receipt of purchase and all parts and keys if applicable to:

ABUS USA LLC

23910 N. 19th Ave., #56

Phoenix, AZ 85085-1850

ABUS products are warranted for a specific period of time from date of purchase. Commercial products are warranted for 2 years against manufacturing defects and ABUS reserves the right to replace or repair the product at its discretion. ABUS will return the repaired or replaced product to the original purchaser.

All products sold under the Vitess™ High Security Cylinder line will have a limited two (2) year warranty from the time that the original goods were transferred from the Purchaser. ABUS Vitess™ high security keys will have a lifetime warranty against manufacturing defects and breakage.

**LIMITATION ON LIABILITY**

To the extent permitted by law, ABUS and its agents and affiliates (collectively "ABUS Parties") shall not be responsible for, and the purchaser hereby assumes the risk of, and hereby releases ABUS for any damages or injury whatsoever (including, without limitation, incidental or consequential damages, damages for lost profits or business interruption, and punitive damages) caused by or related to any use of ABUS Products, regardless of any error, omission, interruption, defect, failure of performance, delay in operation or transmission, even if ABUS has been advised of the possibility of such damages. If, notwithstanding the foregoing limitations, ABUS has any liability to the purchaser despite the foregoing limitations, the purchaser agrees that the ABUS' total liability to the purchaser for all losses, damages, and causes of action, whether in contract, equity, tort (including without limitation, negligence and gross negligence), or otherwise, will not exceed the amount the purchaser paid to ABUS for the ABUS products. Any action or arbitration brought against the ABUS pertaining to or in connection with the ABUS Products must be commenced and served upon ABUS within one (1) year after the date the cause of action arose, and not thereafter. Failure to abide by such deadline will constitute a complete defense for the ABUS Parties to the purchaser's claims.

**NO THIRD PARTY LIABILITY**

If the purchaser uses the ABUS Products on behalf of others or provides to others any products referenced herein, the ABUS Parties shall have no liability to such persons whatsoever, and the purchaser agree to defend and indemnify the ABUS Parties from any and all claims and demands asserted against them, and from any legal fees, costs and other expenses that the ABUS Parties incur therewith.

**GOVERNING LAW & JURISDICTION**

These Terms are governed by the laws of the State of Arizona, U.S.A. but without regard to its principles of conflict of laws. For any interpretational disputes relating to, or claims arising from, these Terms, the purchaser agrees to the exclusive jurisdiction of the Superior Court of Arizona in Maricopa County, provided, however, that such restriction shall not apply to legal actions initiated or brought by ABUS. Upon request by ABUS, all disputes concerning and claims arising from the foregoing shall be referred to binding arbitration in Maricopa County, Arizona by an arbitrator selected only by the Superior Court of Arizona in Maricopa County. The purchaser hereby waives its right to a jury with regard to claims against the ABUS Parties hereunder. The language used in these Terms shall not be construed.

**ABUS | USA**

**[www.abus.com](http://www.abus.com)**

---

23910 North 19th Avenue, #56

Phoenix, AZ 85085

P: 800-352-ABUS

F: 623-516-9934


[customerservice@us.abus.com](mailto:customerservice@us.abus.com)

---

**FIND US @ABUSUSA!**



Due to a policy of continental development, ABUS reserves the right to modify technical details & colors. E&OE ABUS © 2019

 04/22 Price List  
Item 17088

