

# FIRST IMPRESSIONS

Your Entrance to Perfection  
With Quality, Hand Crafted Doors



Proudly Made in U.S.A.





# FIRST IMPRESSIONS

From the Beauty of Handcrafted Wood Doors



W-80 WITH PARIS GLASS AND W-FS SIDELITES

*No other single feature makes a stronger or more immediate statement about a home than the doors that lead you through it. You only have one chance to make a first impression. Make it one they will remember when you welcome them into your home with interior and exterior doors by Koch and Company.*

Koch and Company was founded in 1989 by Jim, Dan and Fred Koch. Their love of woodworking led them to creating a world class door and cabinet manufacturing firm. A dedication to excellence in craftsmanship, quality and customer service has made them a leader in the industry.

Striving to excel is the goal at Koch and Company, where the quality of work and service are matters of personal pride. The "can do" spirit of the American heartland flourishes, and the pride in workmanship sets Koch and Company apart from the rest. The Koch family and the good people who work here are committed to giving you their best. That's why this small town company offers you unrivaled selection, service, and value - as well as high-volume production capable of meeting the most demanding distributor orders.







W-80 W/15 LITE GBG



**Koch doors are proudly made in America, supplying jobs to American workers.**

**All our doors are built by skilled craftsmen who are dedicated to making the finest doors produced in America.**



SL-20



# SENECA LAG DOOR SERIES

## PANELED, FRENCH, AND BIFOLD DOORS

Our selection of stile and rail profiles, panel options, and wood species allows you to choose doors that complement your other woodwork and cabinetry. Combining those options with our wide selection of door designs allows us to meet the needs of most homeowners.

For the most pleasing and consistent grain and color, our interior doors are constructed from top-quality

veneers. The veneers are laminated onto engineered composite cores to eliminate splitting and warping, minimize expansion and contraction, and ensure dimensional stability.

Available woods include Red Oak, Ponderosa Pine, Knotty Pine, Poplar, Cherry, Mahogany, Maple, Hem Fir, Douglas Fir, Birch, Hickory, Walnut, Ash, Knotty Alder, Knotty Cedar, Beech, and others.



SL-33-SP  
RED OAK



SL-21  
BEECH



SL-30  
MDF



SL-46  
RIFT RED OAK



SL-34  
POPLAR



SL-60  
WALNUT



SL-20-A  
KNOTTY ALDER



SL-40-C  
SG POPLAR



SL-64  
RED OAK



IM-20  
CHERRY



# QUALITY DOORS FOR ANY OCCASION



**Applied Molding**



**Bolection Molding**

## DECORATIVE MOLDINGS

Give depth to your doors with decorative molding! Decorative moldings add distinction, style, and beauty to all panel door designs.



**WM-148 Molding**



**SL-20-RVA  
DOUGLAS FIR**



**SL-809C  
ALDER**



**SL-20-BF-A  
KNOTTY ALDER**



**SL-40-A  
MAPLE**



**IM-3403  
RED OAK**



**SL-34  
MAHOGANY**



**IM-45  
BIRCH**



**SL-20-RA-BM  
RUSTIC RED OAK**



**SL-50  
HICKORY**



**SL-40  
PON PINE**



# 1 3/8" STILE PROFILE AND PANEL OPTIONS



SL-20-A



SL-20



SL-20-BF-A

## Raised Panel Options

Profile: 5282  
3/4" Veneered Raised Panel



Profile: 6715  
3/4" Veneered Raised Panel



## Flat Panel Options

Profile: 5426  
3/8" Veneered Flat Panel



Profile: 5925  
3/8" Veneered Flat Panel



Profile: 7797  
3/8" Veneered Flat Panel



Profile: 8315  
3/8" Veneered Flat Panel



\*Profile: 7928  
1/2" Veneered Flat Panel



## Bifold Doors

Koch Bifold Doors are styled to match our 1 3/8" and 1 3/4" interior doors in appearance and built for comparable strength and durability. Veneered composite panels maintain consistent color and grain patterns. Hardware is included.

Available veneers include: Red Oak, Ponderosa Pine, Poplar, Birch, Knotty Pine, Cherry, Mahogany, Maple, Douglas Fir, Hickory, Walnut, Ash, Knotty Alder, and others.

\* This profile will have an upcharge



# 1 3/4" STILE PROFILE AND PANEL OPTIONS

Our Imperial Series combines the natural beauty of wood with exceptional durability. These handcrafted 1 3/4" wood doors have panel, glass, and sidelight options that fit a broad range of architectural styles and settings. The Imperial door is ideal for interior residential, exterior use, and commercial applications.

Imperial Doors have solid wood edge sticking and use lag bolts that are bored in from the door edges to secure stiles and rails for exceptional structural stability. These doors are built to withstand the demands of everyday use without sagging or separating. As in all of our doors, matching wood plugs are inserted to cover the boring hole.

The Imperial Exterior Door will have a weather resistant LSL core and the Imperial Interior Door will have a 1 5/8" industrial grade particle board core.



IM-100PW

## Raised Panel Options

Profile: 7941

1" Veneered Raised Panel



Profile: 2681

1" Veneered Raised Panel



Profile: 2681

1" Veneered Raised Wide Panel



Profile: 7935

\*1 1/4" Veneered Raised Panel



Profile: 7105

1" Veneered Raised Panel



Profile: 7105

1" Veneered Raised Wide Panel



## Flat Panel Options

Profile: 7941

3/8" Veneered Flat Panel



Profile: 2681

3/8" Veneered Flat Panel



Profile: 7105

3/8" Veneered Flat Panel



\*Profile: 7935

3/4" Veneered Flat Panel



Profile: 8315

3/8" Veneered Flat Panel



Profile: 8781

3/8" Veneered Flat Panel



Available veneers include: Red Oak, Ponderosa Pine, Poplar, Birch, Knotty Pine, Cherry, Mahogany, Maple, Douglas Fir, Hickory, Walnut, Ash, Knotty Alder, and others.

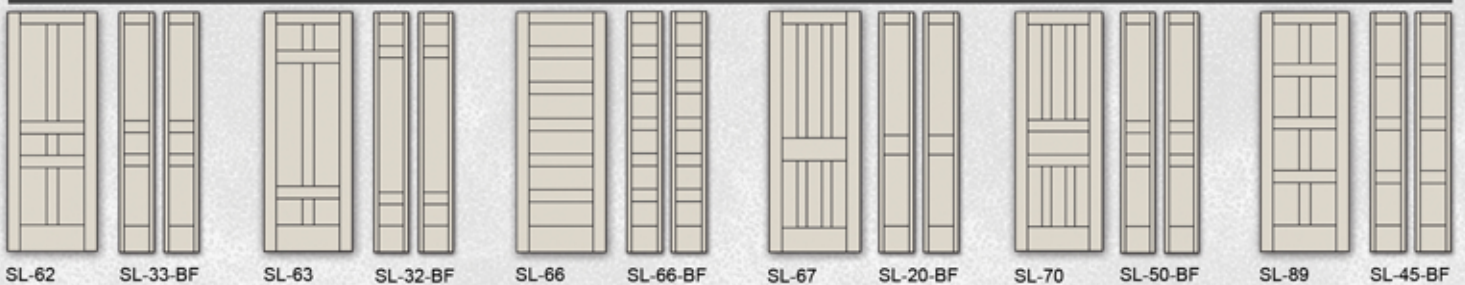
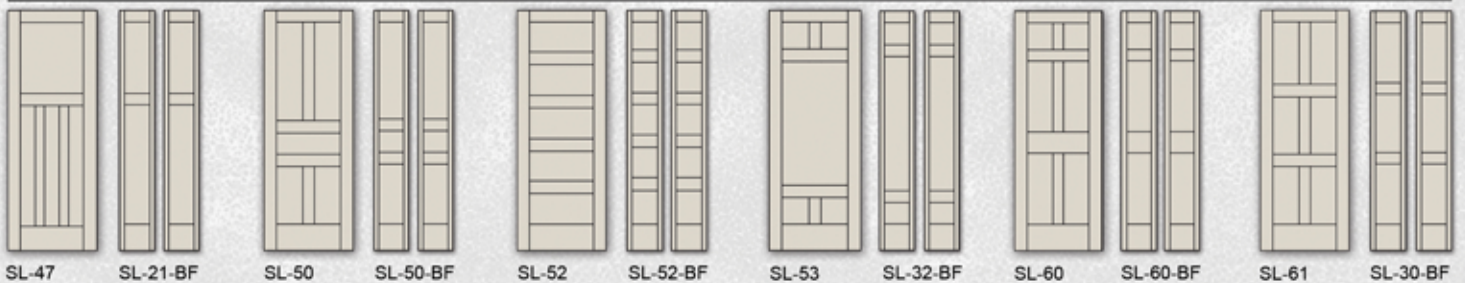
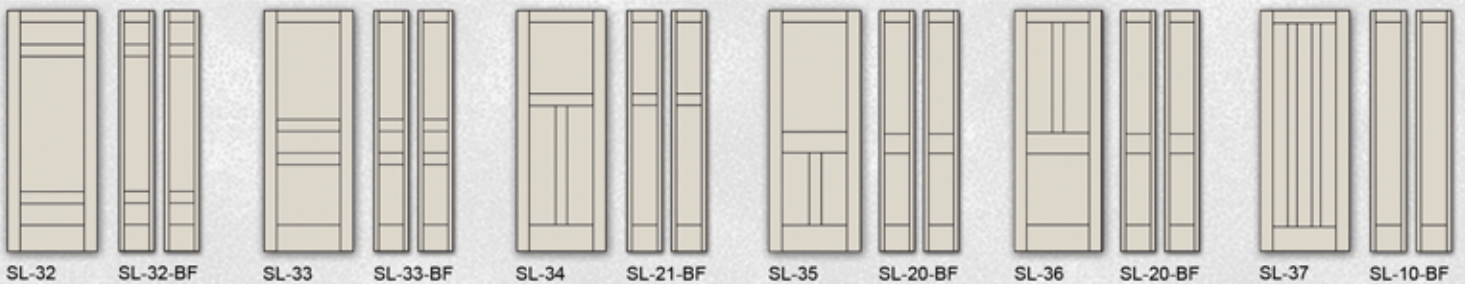
\* This profile will have an upcharge



# 1 3/8" SENECA LAG OR 1 3/4" IMPERIAL

\* Use SL to denote 1 3/8" doors and IM for 1 3/4" doors.

\* All door designs are available with raised or flat panels



\*NOTE: Line art is not drawn to scale.

\*Custom door designs available upon request.





# 1 3/8" SENECA LAG OR 1 3/4" IMPERIAL

Koch and Company will deliver a door that's a perfect reflection of your taste and will compliment your home with the beautiful final touch you're looking for.

											
SL-10-A	SL-10-BF-A	SL-10-C	SL-10-BF-C	SL-20-A	SL-20-BF-A	SL-20-C	SL-20-BF-C	SL-21-A	SL-21-BF-A	SL-21-C	SL-21-BF-C
											
SL-22-A	SL-10-BF-A	SL-22-C	SL-10-BF-C	SL-33-A	SL-33-BF-A	SL-33-C	SL-33-BF-C	SL-34-A	SL-21-BF-A	SL-34-C	SL-21-BF-C
											
SL-35-A	SL-20-BF-A	SL-35-C	SL-20-BF-C	SL-36-A	SL-20-BF-A	SL-36-C	SL-20-BF-C	SL-40-A	SL-20-BF-A	SL-40-C	SL-20-BF-C
											
SL-42-A	SL-33-BF-A	SL-42-C	SL-33-BF-C	SL-43-A	SL-33-BF-A	SL-43-C	SL-33-BF-C	SL-46-A	SL-21-BF-A	SL-46-C	SL-21-BF-C
											
SL-50-A	SL-50-BF-A	SL-50-C	SL-50-BF-C	SL-60-A	SL-60-BF-A	SL-60-C	SL-60-BF-C	SL-61-A	SL-30-BF-A	SL-61-C	SL-30-BF-C
								<p><b>*CATHEDRAL</b></p>  <p><b>ARCH</b></p>  <p>Cathedral doors less than 27" wide that have a verticle rail splitting the top opening will have a 2 1/2" drop.</p>			
SL-62-A	SL-33-BF-A	SL-62-C	SL-33-BF-C	SL-89-A	SL-45-BF-A	SL-89-C	SL-45-BF-C				



# INTERIOR V-GROOVE PANEL DOORS



**KNOTTY PINE  
SL-20-V**



**DOUG FIR  
SL-20-RVA**

V-Groove doors feature a rustic, tongue and groove look that emulates plank doors. Each door is built with stile and rail construction to ensure structural integrity and match our other interior doors. This design effectively eliminates the splitting and cracking to which one-piece solid wood panels are subject. Our V-Groove door is available in flat or raised panel and in paint-grade MDF.

**1 3/8" or 1 3/4" PROFILE: 8728 with flat V-Groove panel**



**1 3/8" PROFILE: 5282 with raised V-Groove panel**



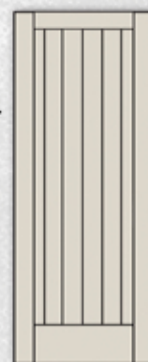
**1 3/8" PROFILE: 6715 with raised V-Groove panel**



**1 3/4" PROFILE: 2681 with raised V-Groove panel**



**1 3/4" PROFILE: 7105 with raised V-Groove panel**



**SL-10-V**



**SL-20-V**



**SL-21-V**



**SL-30-V**

# INTERIOR LOUVER DOORS

Versatile Louver Doors can be used in a variety of settings. Their stiles and rails are proportioned to match our panel door line for a consistent look. They give you added design options and are available in the same wood species as our panel doors. Louvers are rated for paint and stain grade quality. Available in raised or flat panel and in 1 3/8" and 1 3/4" doors.



**HICKORY  
SL-20-LL**



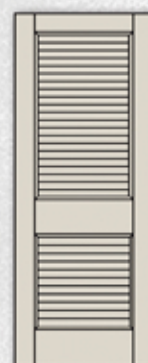
**RED OAK  
SL-20-LP-BF**



**MAHOGANY  
IM-35-L2P**



**Profile: 8729**



**SL-20-LL**



**SL-22-LL**



**SL-35-L2P**



**SL-36-2PL**



**SL-40-2L2P**











# KOCH MDF DOORS ARE BUILT TO LAST











SL-20-A

## 1 3/8" MDF Profiles

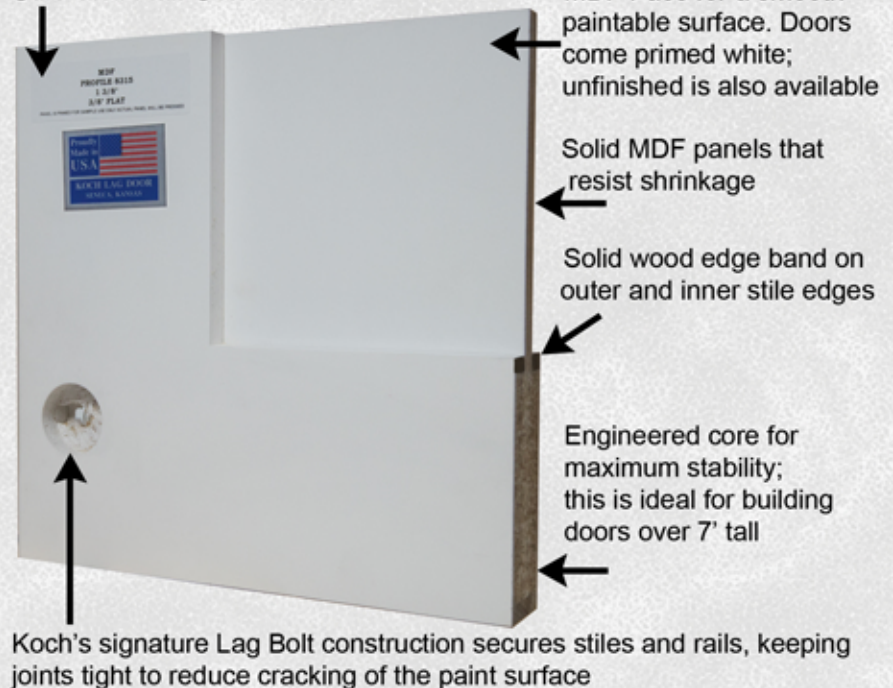
- |  |   |
|--|---|
|    | Profile: 5282<br>3/4" MDF Raised Panel        |
|    | Profile: 6715<br>3/4" MDF Raised Panel        |
|    | Profile: 5426<br>3/8" MDF Flat Panel          |
|    | Profile: 5925<br>3/8" MDF Flat Panel          |
|    | Profile: 8315 Standard<br>3/8" MDF Flat Panel |
|    | Profile: 8728<br>**5/8" MDF V-Groove Panel    |
|    | *Profile: 8728<br>5/8" MDF Flat Panel         |
|  | *Profile: 7928<br>1/2" MDF Flat Panel         |

## 1 3/4" MDF Profiles

- |   |   |
|---|---|
|  | Profile: 2681<br>1" MDF Raised Panel          |
|  | Profile: 7941<br>1" MDF Raised Panel          |
|  | Profile: 8315 Standard<br>3/8" MDF Flat Panel |
|  | Profile: 8781<br>3/8" MDF Flat Panel          |
|  | Profile: 7941<br>3/8" MDF Flat Panel          |
|  | Profile: 8728<br>5/8" MDF Flat Panel          |
|  | Profile: 8728<br>*5/8" MDF Flat V-Groove      |
|  | Profile: 7935<br>*3/4" MDF Flat Panel         |

*Not* JUST ANOTHER MDF DOOR!

### Stile and Rail Construction



Available sizes: up to 4'0 in width , 8'0 in height. All designs on page 8 and 9 are available in MDF, including molding options.

\*\*V-Groove is also available in raised panel. \*This profile will have an upcharge



# STILE AND RAIL FIRE DOORS



Koch and Company offers you an impressive selection of options in their Fire Door Line.

## 20, 45, 60 and 90 Minute Positive Pressure

Our Fire Rated Doors are a perfect match to our interior stile and rail doors. Almost all door designs on page 8 & 9 can be built as a fire rated door. Available wood species are: Red Oak, Ponderosa Pine, Poplar, Birch, Knotty Pine, Cherry, Mahogany, Maple, Douglas Fir, Hickory, Walnut, Clear Alder, Knotty Alder, and Primed MDF. Other species available upon request.

Maximum door size for 20, 45, 60 and 90 minute single door is 4'0 x 8'0. The maximum door size for 20, 45, and 60 minute double doors is 7'0 x 8'0. You must specify if a door is to be used as a double door as it requires special construction.

## Available Profiles

Profile: 5503 Shaker  
Panel: 3/4" Flat  
Molding: Bolection



Profile: 5503 Shaker  
Panel: 3/4" Flat



Profile: 605  
Panel: 3/4" Flat



Profile: 5503  
Panel: 3/4" V-Groove



Profile: 7935  
Panel: 3/4" Flat



Profile: 5503 Shaker  
Panel: 1 1/4" Raised Wide Panel  
Molding: Bolection



Profile: 5505 Mission  
Panel: 3/4" Flat



Profile: 605  
Panel: 1 1/4" Raised Panel



Profile: 605  
Panel: 1 1/4" Raised Wide Panel



Profile: 7935  
Panel: 1 1/4" Raised Panel



### Wood Frames - Single Rabbet or Flat Jamb with Applied Stop

#### 20 MINUTE

3'6 x 8'0 Single (softwood)    5'6 x 8'0 Pair (softwood)  
4'0 x 9'0 Single (hardwood)    8'0 x 9'0 Pair (hardwood)



#### 45, 60 & 90 MINUTE

4'0 x 8'0 Single    7'0 x 8'0 pair (N/A in 90 min)



Tested for Compliance with the following standards:  
ASTM E2074 (2004), UL 10(b) (2008),  
ASTM E-152-81a, UBC 7-2 (1997),  
NFPA 252 (2008), UL 10(c) (2001)  
CAN / ULC s104 1980 (R1985),  
UBC 7-2 (1994)





# KOCH QUALITY

## LET US MAKE AN IMPRESSION ON YOU

We turn positive first impressions into lasting ones by building our doors to stand the test of time. The process begins with the selection of the finest hardwoods and plain-cut veneers. Stiles and rails are edge-glued with lag bolt assembly to ensure long-term structural integrity. By using specially engineered core materials that resist moisture and minimize the effect of climate and temperature changes, we eliminate the prime causes of splitting and cracking. Our door panels are set into

compression foam bumpers that keep them centered and absorb the effects of expansion and contraction. After assembly, our doors are trimmed to exact width and height for a consistently precise fit. Three-phase sanding includes a final hand sanding to remove any cross-grain scratches. We eliminate glue residue and individually inspect every door before it is carefully packed and loaded for delivery. The result is a door that fits properly, is ready to hang, and provides lasting value.



### HAND SANDING

Extra attention to hand sanding sets us apart from others in the industry.



### LAG BOLT CONSTRUCTION

Lag bolt construction is a signature feature of Koch Doors. Bored through door edges to secure stiles and rails, these long metal bolts are far stronger than wood dowels used by other manufacturers, and guard against joint separation.



SL-52

**Koch Doors is committed to delivering quality, hand crafted doors to your home.**

**Create a welcoming entry for family and guests with the style and beauty of Koch Doors.**

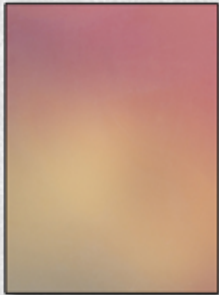
All doors are CARB phase II compliant

We're always searching for better ways to meet our customer's needs; consequently, specifications are subject to change without notice.



# DECORATIVE GLASS

Decorative glass provides privacy while still allowing the transmission of light.



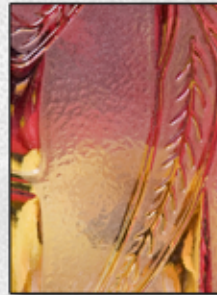
Acid Etch



Autumn



Bamboo



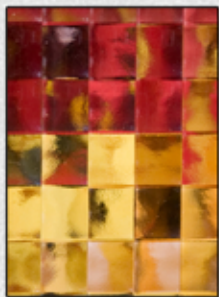
Bamboo Frost



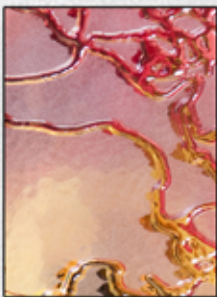
Chinchilla



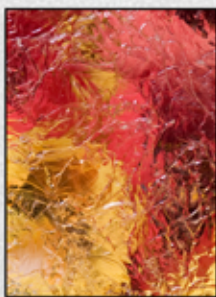
Cotswald



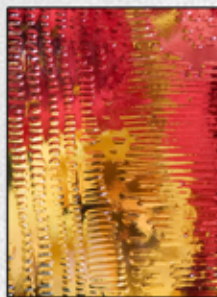
Cross Reeded



Delta Frost



Double Gluechip



Driftwood



Euro Rain Frost



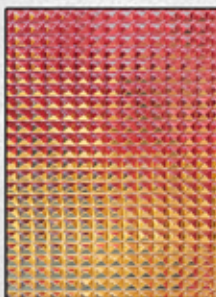
Everglade



Flutex



Gluechip



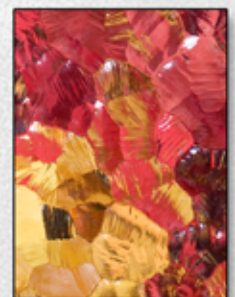
HV-155



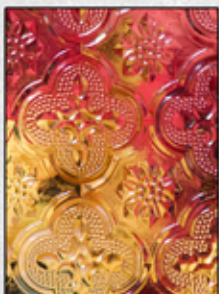
Minster



Mirror



Monumental  
Flemish



Morisco



P-516



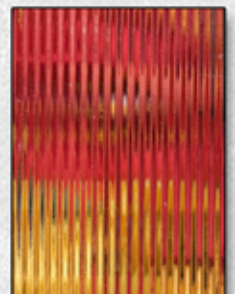
Pebbles



Rain



Reeded



Ribbed

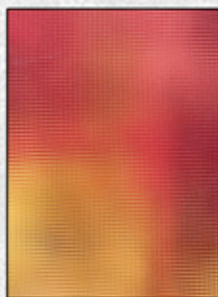


# DECORATIVE GLASS

Crystal-clear, frosted, etched and decorative patterns are available in any of our french doors.



Sante Fe



Screenlite



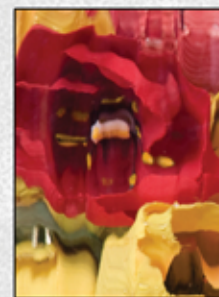
Seedy



Seedy Swirl

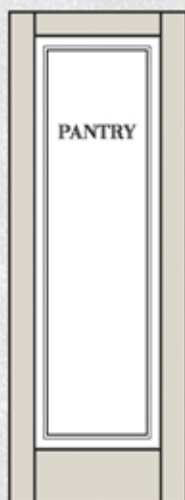


Taffeta

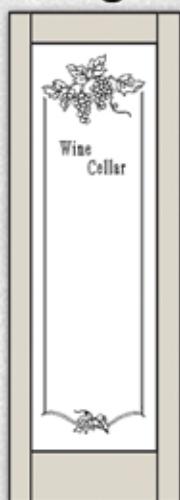


Water

## Sandblast Designs



SL-KPT



SBDR 10



SBDR 13



SBDR 72



SBDR 156



SBDR 120

## Full-Lite Doors



SL-80 WITH RIBBED GLASS

## Pantry Doors



SL-80-SBDR 02

## Chalkboard Doors



SL-2001-A-CB HAS CHALKBOARD

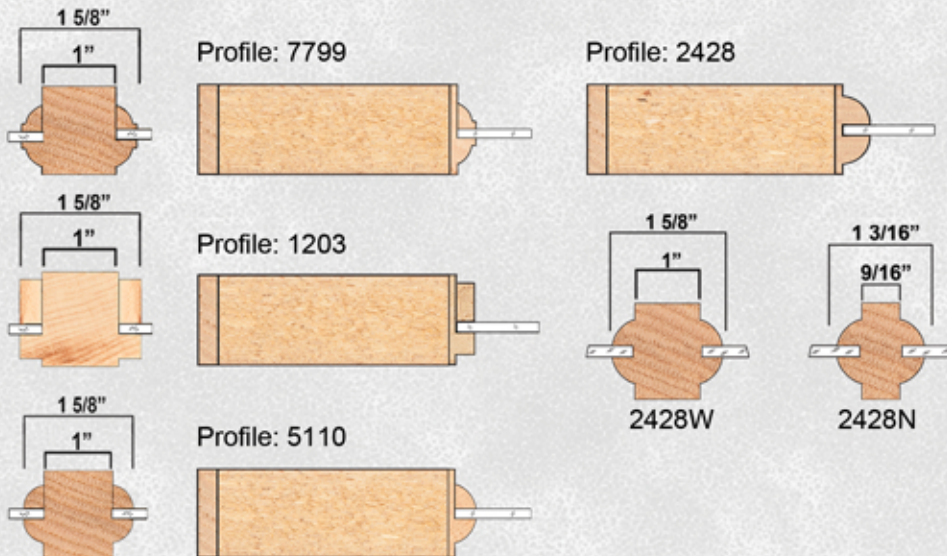


# 1 3/8" INTERIOR FRENCH DOORS

## Seneca Lag Door Series French Doors

Seneca Lag French Doors brighten any room and contribute to a friendly, open feeling. These true divided-lite doors are built with individual panes of glass in the authentic French Door manner. Designers tell us that our use of prominent mullions and separate lites enhances both the strength and attractiveness of these doors. You can order mullions in either 1" or 9/16" widths. Stile and rail widths are identical to those used in our panel doors. All glass is tempered and available in many glass options.

### Profiles and Mullions

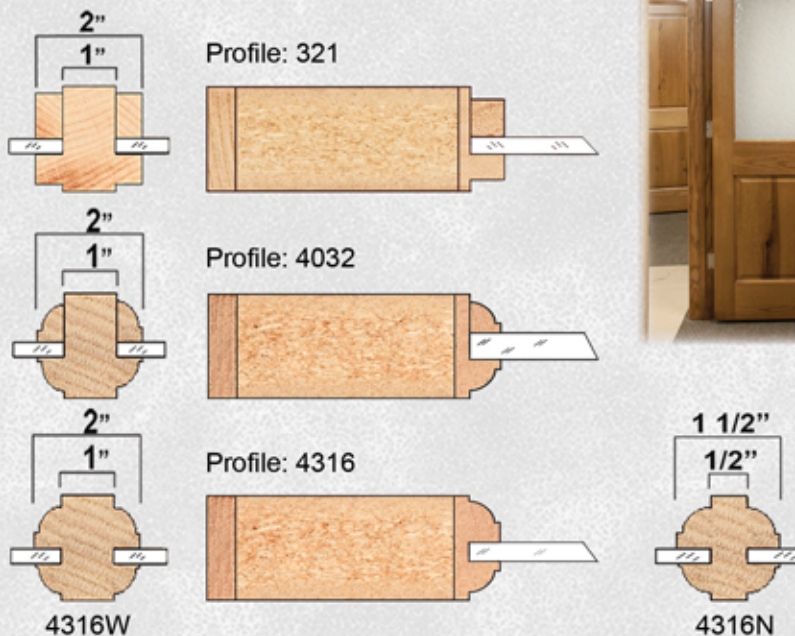


SL-806C and SL-50

# 1 3/4" IMPERIAL FRENCH DOORS

All Imperial French Doors come with individual panes of glass for that classic look. Glazing options include insulated glass as well as frosted, glue chip, rain, quarter-inch clear glass and more. Imperial French Doors are available for interior residential and commercial installations.

### Profiles and Mullions



IM-2001



IM-80



# FRENCH DOORS AND SIDELIGHTS

1 3/8" or 1 3/4" Doors - Use SL to denote 1 3/8" doors and IM to denote 1 3/4" doors



SL-80



SL-80 10LVG



SL-80 15LVG



SL-8005



SL-8010



SL-8012-2W6H



SL-8012-3W4H



SL-8015



SL-8018



SL-8412



SL-8601



SL-8612



SL-806C



SL-806C-OS



SL-809C



SL-34-3L



SL-3401



SL-3403



SL-64



SL-65



SL-68



SL-2001



SL-3003



SL-4301



SL-4504



SL-5205



SL-646



SL-649



SL-649C



SL-FS1



SL-FS2



SL-FS3C



SL-FS5



SL-FS6



SL-ES1



SL-ES3



SL-ES3C



SL-LS1



SL-LS4

All french doors with panels are available in raised or flat panel



# PREMIER DOORS

## WOOD DOORS WITH DECORATIVE GLASS INSERTS

Bring extra light and interest to entry ways. Add the beauty and functionality of clear, obscure, colored, or leaded glass inserts to front halls and foyers with our Premier Exterior Doors. We have built these robust 1 3/4" doors to accept standard 1" glass lites. These are the insulated and decorative glass lites normally found only in steel doors. The glass inserts are installed in solid hardwood framing. Premier Doors offer the same lag bolt, thick wood veneers,

and weather-resistant engineered core designs featured on our other exterior doors. Available woods are: Red Oak, Poplar, Pine, Cherry, and Maple.



W-81 WITH HERLOOMS GLASS

SL-20-A





## BARN DOORS

Barn doors can be used in modern, contemporary and rustic applications. They can add charm and uniqueness to any room in your house, and offer a level of functionality that you can't get with traditional interior doors.



Any of our  
1 3/8"  
and 1 3/4"  
interior door  
designs  
can be used  
for barn doors.



SL-10-ZBAR

Barn doors are perfect for areas that do not have enough space for a swinging door, and pocket doors are not an option.

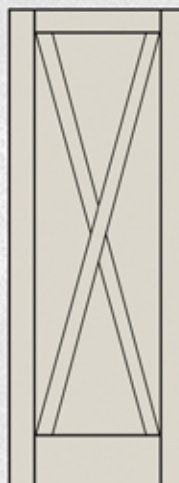


PROFILE 8315

Easy to install, Koch Barn doors can be a focal point in any room of your home.



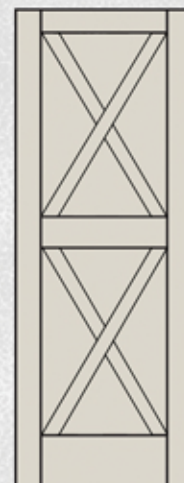
SL-10-ZBAR



SL-10-XBAR



SL-20-KBAR



SL-20-DBLXBAR



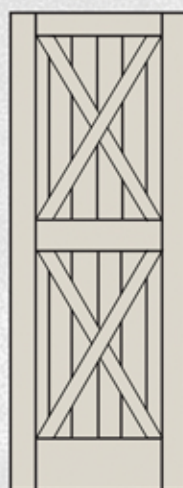
SL-10-V-ZBAR



SL-10-V-XBAR



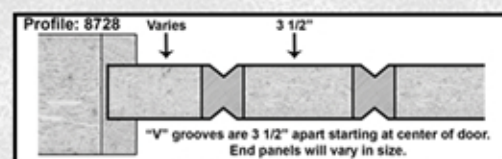
SL-20-V-KBAR



SL-20-V-DBLXBAR



PROFILE 8728



Great for bathrooms, bedrooms, offices, pantries, closets and areas where narrow hallways restrict swing door movement.



Celebrating  
over  
**25**  
YEARS  
of QUALITY  
CRAFTSMANSHIP

Koch & Co., Inc.  
Seneca, KS

Koch & Co., Inc.



Made in the USA

1809 North Street  
Seneca, KS 66538  
1-800-540-5624

For more information on our interior doors,  
exterior doors, and our  
cabinet line visit our website

[WWW.KOCHANDCO.COM](http://WWW.KOCHANDCO.COM)

VER-1-2017

W-3401-CAM WITH TOPAZ GLASS

Distributed by

